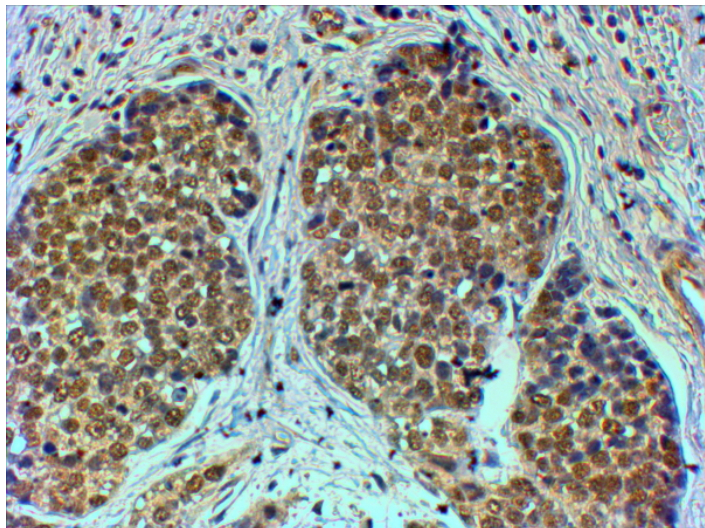


GOAT ANTI-TIF1A / TRIM24 ANTIBODY

SKU: EB05807



SPECIFICATIONS

Formulation Supplied at 0.5 mg/ml in Tris saline, 0.02% sodium azide, pH7.3 with 0.5% bovine serum albumin.

Unit Size 100 µg

Storage Instructions Aliquot and store at -20°C. Minimize freezing and thawing.

Synonym / Alias Names TRIM24|TIF1|transcriptional intermediary factor 1|PTC6|TF1A|TIF1A|Tif1a|hTIF1|TIF1ALPHA|transcriptional intermediary factor 1 alpha|tripartite motif protein 24|tripartite motif-containing 24|RNF82

Accession ID NP_056989.2; NP_003843.3

Blocking Peptide EBP05807

Immunogen Peptide with sequence C-KRLKSIEERQLLK, from the C Terminus of the protein sequence according to NP_056989.2; NP_003843.3.

Product Comments This antibody is expected to recognise both reported isoforms, as represented by NP_003843.3 and NP_056989.2.

Peptide Sequence C-KRLKSIEERQLLK

Purification Method Purified from goat serum by ammonium sulphate precipitation followed by antigen affinity chromatography using the immunizing peptide.

Shipping Instructions	Refrigerated
Predicted Species	Human, Cow
Reactive Species	Human
Human Gene ID	8805
Product Grade	https://prod-vector-labs-pimcore-assets.s3.us-east-1.amazonaws.com/assets/products/image/elite_medium.png
IHC Results	In paraffin embedded Human Breast cancer shows nuclear staining in the distorted lobules. Recommended concentration, 4-6µg/ml.
ELISA	
Detection Limit	Antibody detection limit dilution 1:32000.
Western Blot	Preliminary experiments gave an approx 120kDa band in human kidney and heart lysates at 1ug/ml, however prominent bands were also seen at 25kDa and 45kDa. Please note that currently we cannot find an explanation in the literature for some of the bands we observe given the predicted sizes of approx. 117kDa and 121kDa according to NP_003843 and NP_056989. We would appreciate any feedback from people in the field - have any results been reported with other antibodies/lysates? Have any further splice variants/modified forms been reported?
Application Type	Pep-ELISA, IHC

DOCUMENTS

- [Data Sheet](#)

GALLERY IMAGES

