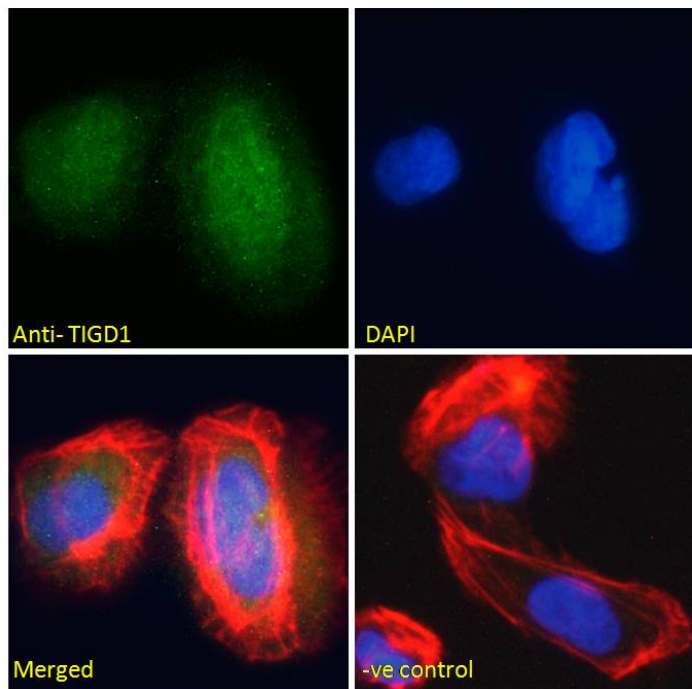


GOAT ANTI-TIGD1 / EEYORE ANTIBODY

SKU: EB06265



SPECIFICATIONS

Formulation Supplied at 0.5 mg/ml in Tris saline, 0.02% sodium azide, pH7.3 with 0.5% bovine serum albumin.

Unit Size 100 µg

Storage Instructions Aliquot and store at -20°C. Minimize freezing and thawing.

Synonym / Alias Names TIGD1|EEYORE|tigger transposable element derived 1|jerky (mouse) homolog-like|hypothetical protein LOC200765|jerky homolog-like

Usage **Immunofluorescence:** Strong expression of the protein seen in the nuclei of U2OS cells.

Summary Recommended concentration: 10µg/ml.

Accession ID NP_663748.1

Blocking Peptide EBP06265

Immunogen Peptide with sequence C-PAKRVRLTEGSD, from the C Terminus of the protein sequence according to NP_663748.1.

Peptide Sequence	C-PAKRVRLTEGSD
Purification Method	Purified from goat serum by ammonium sulphate precipitation followed by antigen affinity chromatography using the immunizing peptide.
Shipping Instructions	Refrigerated
Predicted Species	Human
Reactive Species	Human
Human Gene ID	200765
Product Grade	https://prod-vector-labs-pimcore-assets.s3.us-east-1.amazonaws.com/assets/products/image/elite_medium.png
ELISA Detection Limit	Antibody detection limit dilution 1:16000.
Western Blot	Preliminary experiments gave no signal but low background in Human Brain and Kidney extracts at up to 1µg/ml.
Application Type	Pep-ELISA, IF

DOCUMENTS

- [Data Sheet](#)

GALLERY IMAGES

