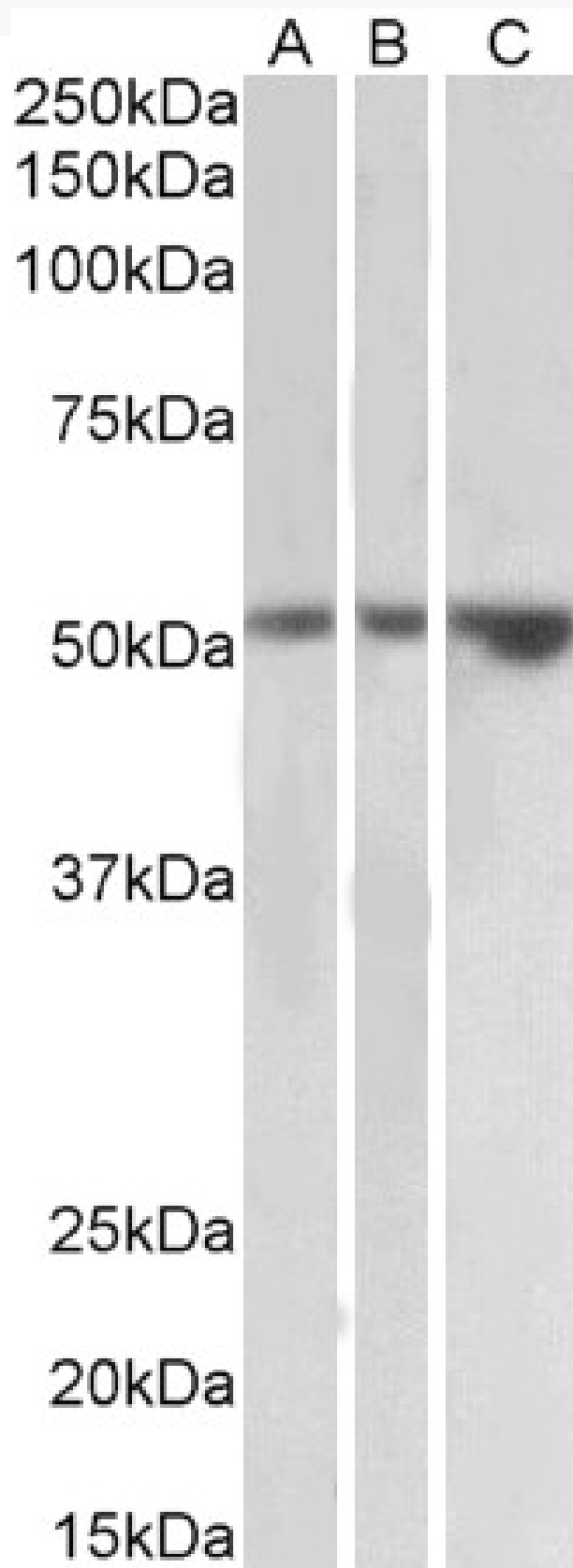


GOAT ANTI-TIM-1 ANTIBODY

SKU: EB11762



SPECIFICATIONS

Formulation	Supplied at 0.5 mg/ml in Tris saline, 0.02% sodium azide, pH7.3 with 0.5% bovine serum albumin.
Unit Size	100 µg
Storage Instructions	Aliquot and store at -20°C. Minimize freezing and thawing.
Synonym / Alias Names	TIMD-1 TIMD1 TIM-1 TIM1 TIM T-cell membrane protein 1 T cell immunoglobulin domain and mucin domain protein 1 OTTHUMP00000224053 OTTHUMP00000224052 OTTHUMP00000224005 KIM-1 KIM1 kidney injury molecule 1 hepatitis A virus cellular receptor 1 HAVCR-1 HAVCR1 HAVCR
Blocking Peptide	EBP11762
Immunogen	Peptide with sequence C-THVTYRKDTRYK, from the internal region of the protein sequence according to .
Product Comments	The immunizing peptide represents part of the extracellular domain. Reported variants represent identical protein: NP_001166864.1, NP_001092884.1, NP_036338.2
Peptide Sequence	C-THVTYRKDTRYK
Purification Method	Purified from goat serum by ammonium sulphate precipitation followed by antigen affinity chromatography using the immunizing peptide.
Shipping Instructions	Refrigerated
Predicted Species	Human
Reactive Species	Human
Human Gene ID	26762
Product Grade	https://prod-vector-labs-pimcore-assets.s3.us-east-1.amazonaws.com/assets/products/image/elite_medium.png
ELISA Detection Limit	Antibody detection limit dilution 1:16000.
Western Blot	Approx 52kDa band observed in Human Kidney, Testis and Uterus lysates (calculated MW of 39.2kDa according to NP_036338.2). This molecular weight is routinely observed by other sources. Recommended concentration: 1-3µg/ml.
Application Type	Pep-ELISA, WB

DOCUMENTS

- [Data Sheet](#)

GALLERY IMAGES

