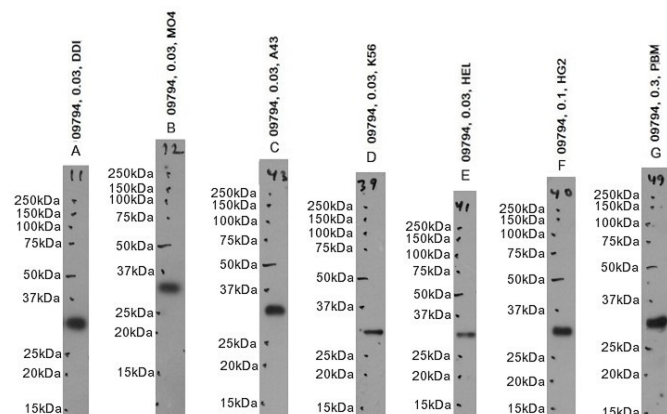


GOAT ANTI-TIPRL ANTIBODY

SKU: EB09794



SPECIFICATIONS

Formulation	Supplied at 0.5 mg/ml in Tris saline, 0.02% sodium azide, pH7.3 with 0.5% bovine serum albumin.
Unit Size	100 µg
Storage	Aliquot and store at -20°C. Minimize freezing and thawing.
Instructions	
Synonym / Alias	TIPRL yeast YPR037W and worm TIP41, TOR signalling pathway regulator-like TIP41, TOR signaling pathway regulator-like (S. cerevisiae) TIP41 TIP putative MAPK activating protein OTTHUMP00000032582 OTTHUMP00000032581 MGC3794 dj69E11.3 CG9578-like
Names	
Usage Summary	Flow Cytometry: Flow cytometric analysis of A431 cells. Recommended concentration: 10ug/ml.
Accession ID	NP_690866.1
Blocking Peptide	EBP09794
Immunogen	Peptide with sequence C-RIDPNPADSQKSTQ, from the C Terminus of the protein sequence according to NP_690866.1.
Product Comments	This antibody is expected to recognize isoform 1 (NP_690866.1).
Peptide Sequence	C-RIDPNPADSQKSTQ
Purification Method	Purified from goat serum by ammonium sulphate precipitation followed by antigen affinity chromatography using the immunizing peptide.
Shipping Instructions	Refrigerated

Predicted Species	Human
Reactive Species	Human
Human Gene ID	261726
Mouse Gene ID	226591
Rat Gene ID	360869
Product Grade	https://prod-vector-labs-pimcore-assets.s3.us-east-1.amazonaws.com/assets/products/image/elite_plus_medium.png
IHC Results	Paraffin embedded Human Breast. Recommended concentration: 3.75µg/ml.
ELISA	
Detection Limit	Antibody detection limit dilution 1:16000.
Western Blot	Approx. 30kDa band observed in lysates of cell lines Daudi, K562, HeLa, HepG2 and peripheral blood Monocytes (PBM), and approx. 32kDa in lysates of cell lines A431 and MOLT4 (calculated MW of 31.4kDa according to NP_690866.1). Recommended concentration: 0.03-0.3µg/ml. Primary incubation 1 hour at room temperature.
Application Type	Pep-ELISA, WB, IHC, FC

DOCUMENTS

- [Data Sheet](#)

GALLERY IMAGES

