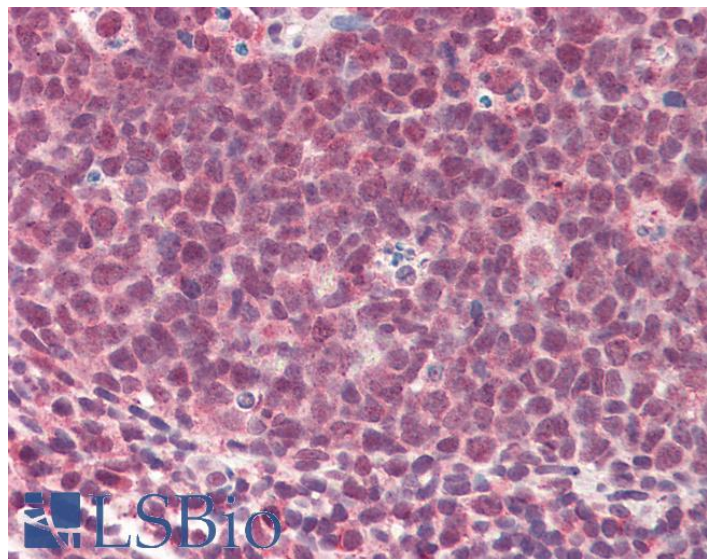


GOAT ANTI-TMEM205 (AA142-151) ANTIBODY

SKU: EB10487



SPECIFICATIONS

Formulation Supplied at 0.5 mg/ml in Tris saline, 0.02% sodium azide, pH7.3 with 0.5% bovine serum albumin.

Unit Size 100 µg

Storage Instructions Aliquot and store at -20°C. Minimize freezing and thawing.

Synonym /

Alias TMEM205|UNQ501|transmembrane protein 205|MGC3205|MGC110858|MBC3205

Names

Accession ID NP_212133.1

Blocking Peptide EBP10487

Immunogen Peptide with sequence C-QLREKDPKYS, from the internal region of the protein sequence according to NP_212133.1.

Product Comments Reported variants represent identical protein: NP_940938.1, NP_212133.1, NP_001138888.1.

Peptide Sequence C-QLREKDPKYS

Purification Method Purified from goat serum by ammonium sulphate precipitation followed by antigen affinity chromatography using the immunizing peptide.

Shipping Instructions	Refrigerated
Predicted Species	Human, Mouse, Rat
Reactive Species	Human
Human Gene ID	374882
Mouse Gene ID	235043
Rat Gene ID	300441
Product Grade	https://prod-vector-labs-pimcore-assets.s3.us-east-1.amazonaws.com/assets/products/image/elite_medium.png
IHC Results	Paraffin embedded Human Tonsil. Recommended concentration: 5µg/ml.
ELISA	
Detection Limit	Antibody detection limit dilution 1:16000.
Western Blot	Approx 22kDa band observed in Human Pancreas lysates (calculated MW of 21.2kDa according to NP_212133.1). Recommended concentration: 0.03-0.1µg/ml. Primary incubation was 1 hour.
Application Type	Pep-ELISA, WB, IHC

DOCUMENTS

- [Data Sheet](#)

GALLERY IMAGES

