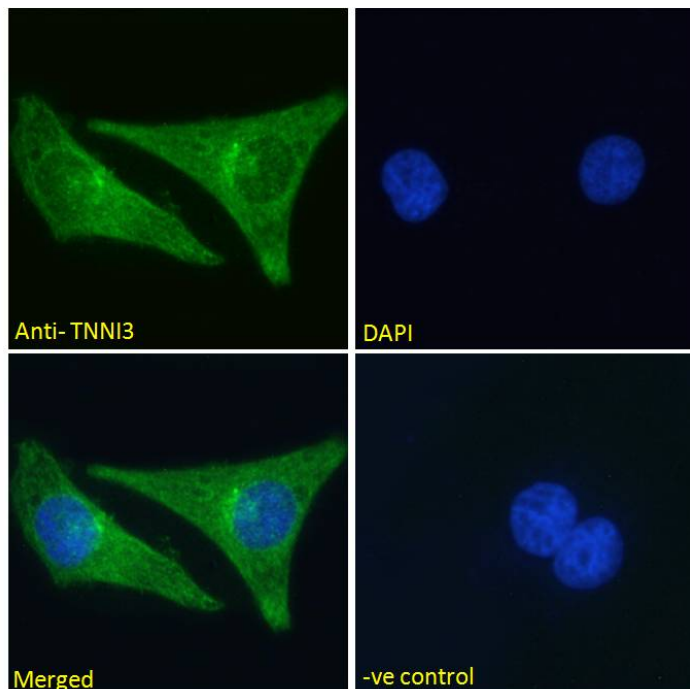


# GOAT ANTI-TNNI3 (AA117-127) ANTIBODY

SKU: EB11958



## SPECIFICATIONS

**Formulation** Supplied at 0.5 mg/ml in Tris saline, 0.02% sodium azide, pH7.3 with 0.5% bovine serum albumin.

**Unit Size** 100 µg

**Storage Instructions** Aliquot and store at -20°C. Minimize freezing and thawing.

**Synonym /**

**Alias** troponin I, cardiac muscle|cTnI|TNNC1|RCM1|CMH7|CMD2A|CMD1FF|troponin I type 3 (cardiac)|TNNI3

**Names**

**Usage** **Immunofluorescence:** Strong expression of the protein seen in the cytoplasm of U2OS and

**Summary** HeLa cells. Recommended concentration: 10µg/ml.

**Accession ID** NP\_000354.4

**Blocking Peptide** EBP11958

**Immunogen** Peptide with sequence C-KVTKNITEIAD, from the internal region of the protein sequence according to NP\_000354.4.

<b>Peptide Sequence</b>	C-KVTKNITEIAD
<b>Purification Method</b>	Purified from goat serum by ammonium sulphate precipitation followed by antigen affinity chromatography using the immunizing peptide.
<b>Shipping Instructions</b>	Refrigerated
<b>Predicted Species</b>	Human, Mouse, Rat, Dog, Pig, Cow
<b>Reactive Species</b>	Human, Mouse, Rat, Pig
<b>Human Gene ID</b>	7137
<b>Mouse Gene ID</b>	21954
<b>Rat Gene ID</b>	29248
<b>Product Grade</b>	<a href="https://prod-vector-labs-pimcore-assets.s3.us-east-1.amazonaws.com/assets/products/image/elite_medium.png">https://prod-vector-labs-pimcore-assets.s3.us-east-1.amazonaws.com/assets/products/image/elite_medium.png</a>
<b>ELISA Detection Limit</b>	Antibody detection limit dilution 1:128000.
<b>Western Blot</b>	Approx 25+26kDa doublet band observed in Human Heart, approx 24+27kDa in Mouse Heart, approx 25kDa in Rat Heart and approx 27kDa in Pig Heart lysates (calculated MW of 24kDa according to Human NP_000354.4, and Pig NP_001092069.1 and 24.3kDa according to Mouse NP_033432.1 and Ra tNP_058840.1 ). This molecular weight is routinely observed by other sources. Recommended concentration: 0.1-0.3µg/ml. Primary incubation 1 hour at room temperature.
<b>Application Type</b>	Pep-ELISA, WB, IF

## DOCUMENTS

- [Data Sheet](#)

## GALLERY IMAGES

