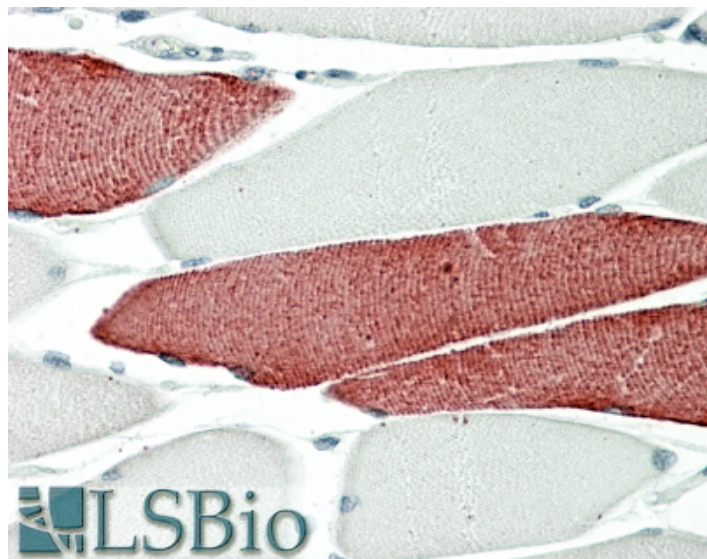


# GOAT ANTI-TNNT3 ANTIBODY

**SKU:** EB12033



## SPECIFICATIONS

<b>Formulation</b>	Supplied at 0.5 mg/ml in Tris saline, 0.02% sodium azide, pH7.3 with 0.5% bovine serum albumin.
<b>Unit Size</b>	100 µg
<b>Storage Instructions</b>	Aliquot and store at -20°C. Minimize freezing and thawing.
<b>Synonym / Alias Names</b>	troponin-T3, skeletal, fast troponin T, fast skeletal muscle fast skeletal muscle troponin T fTnT beta-TnTF beta TnTF TNNT3 troponin T type 3 (skeletal, fast) TNNT3
<b>Accession ID</b>	NP_006748.1; NP_001036246.1; NP_001036247.1
<b>Blocking Peptide</b>	EBP12033
<b>Immunogen</b>	Peptide with sequence C-TTLRSRIDQAQKHSK, from the C Terminus of the protein sequence according to NP_006748.1; NP_001036246.1; NP_001036247.1.
<b>Product Comments</b>	This antibody is expected to recognize isoform 1, 2 and 4 (NP_006748.1; NP_001036246.1; NP_001036247.1). Reported variants represent identical protein: NP_001284575.1, NP_001036247.1
<b>Peptide Sequence</b>	C-TTLRSRIDQAQKHSK
<b>Purification Method</b>	Purified from goat serum by ammonium sulphate precipitation followed by antigen affinity chromatography using the immunizing peptide.

<b>Shipping Instructions</b>	Refrigerated
<b>Predicted Species</b>	Human, Mouse, Rat
<b>Reactive Species</b>	Human, Mouse, Rat
<b>Human Gene ID</b>	7140
<b>Mouse Gene ID</b>	21957
<b>Rat Gene ID</b>	24838
<b>Product Grade</b>	<a href="https://prod-vector-labs-pimcore-assets.s3.us-east-1.amazonaws.com/assets/products/image/elite_medium.png">https://prod-vector-labs-pimcore-assets.s3.us-east-1.amazonaws.com/assets/products/image/elite_medium.png</a>
<b>IHC Results</b>	In paraffin embedded Human Skeletal Muscle shows staining of select fibrils. Recommended concentration, 4-8µg/ml.
<b>ELISA Detection Limit</b>	Antibody detection limit dilution 1:128000.
<b>Western Blot</b>	Approx 35kDa band observed in Human, Mouse and Rat Skeletal Muscle lysates (calculated MW of 30.6kDa according to NP_006748.1). The observed molecular weight corresponds to earlier findings in literature with different antibodies (Marian et al, Circ Res. 1997 Jul;81(1):76-85. PMID: 9201030.). Recommended concentration: 0.01-0.03µg/ml.
<b>Application Type</b>	Pep-ELISA, WB, IHC

## DOCUMENTS

- [Data Sheet](#)

## GALLERY IMAGES

