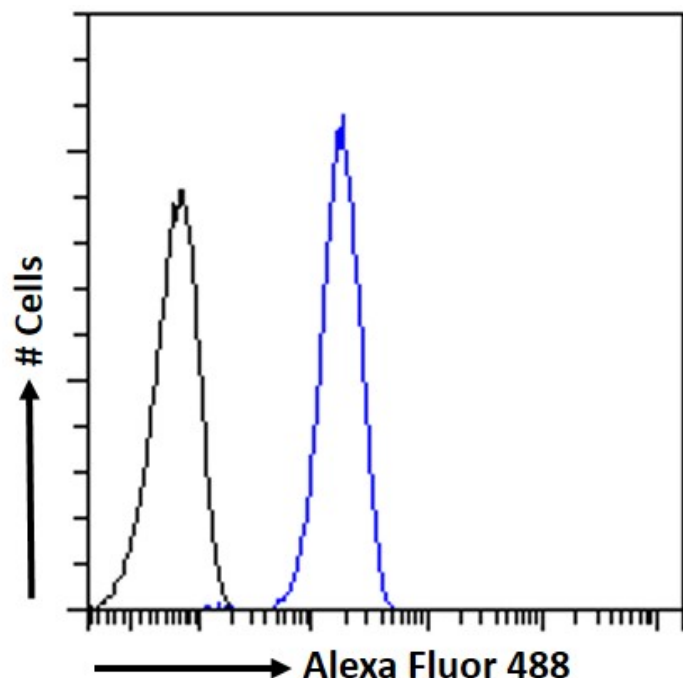


GOAT ANTI-TOM1L1 / SRCASM ANTIBODY

SKU: EB08388



SPECIFICATIONS

Formulation	Supplied at 0.5 mg/ml in Tris saline, 0.02% sodium azide, pH7.3 with 0.5% bovine serum albumin.
Unit Size	100 µg
Storage Instructions	Aliquot and store at -20°C. Minimize freezing and thawing.
Synonym / Alias Names	target of myb1-like 1 target of myb 1-like 1 Src activating and signaling molecule target of myb1 (chicken)-like 1 SRCASM TOM1L1
Usage Summary	<p>Immunofluorescence: Strong expression of the protein seen in the cytoplasm of HeLa cells.</p> <p>Recommended concentration: 10µg/ml.</p> <p>Flow Cytometry: Flow cytometric analysis of HeLa cells. Recommended concentration: 10ug/ml.</p>
Accession ID	NP_005477.2; NP_001308102.1; NP_001308103.1
Blocking Peptide	EBP08388

Immunogen	Peptide with sequence C-EQNKNQKEATNTTSE, from the internal region of the protein sequence according to NP_005477.2; NP_001308102.1; NP_001308103.1.
Peptide Sequence	C-EQNKNQKEATNTTSE
Purification Method	Purified from goat serum by ammonium sulphate precipitation followed by antigen affinity chromatography using the immunizing peptide.
Shipping Instructions	Refrigerated
Predicted Species	Human
Reactive Species	Human
Human Gene ID	10040
Product Grade	https://prod-vector-labs-pimcore-assets.s3.us-east-1.amazonaws.com/assets/products/image/elite_plus_medium.png
ELISA Detection Limit	Antibody detection limit dilution 1:64000.
Western Blot	<p>This antibody was observed to recognize variations of bands/isoforms at approx. 37kDa, 45kDa, 50kDa, 55kDa and 60kDa in lysates of cell lines HEK293, A431 and HeLa, and in Human Cerebellum lysates (calculated MW of 38.7kDa according to NP_001308102.1, 44.3kDa according to NP_001308103.1 and 53.0kDa according to NP_005477.2). All bands were blocked by incubation with the immunizing peptide; please refer to WB images for details.</p> <p>Recommended concentration: 1-2µg/ml. Primary incubation 1 hour at room temperature. Positive Control: A batch specific positive control lysate is available for this product. Please contact Sales@everestbiotech.com for availability.</p>
Application Type	Pep-ELISA, WB, IF, FC

DOCUMENTS

- [Data Sheet](#)

GALLERY IMAGES

