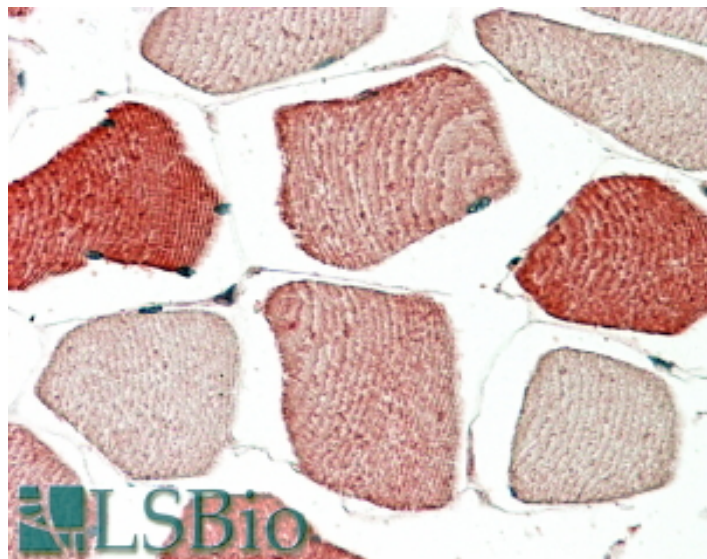


# GOAT ANTI-TOM1L2 ANTIBODY

**SKU:** EB06556



## SPECIFICATIONS

**Formulation** Supplied at 0.5 mg/ml in Tris saline, 0.02% sodium azide, pH7.3 with 0.5% bovine serum albumin.

**Unit Size** 100 µg

**Storage Instructions** Aliquot and store at -20°C. Minimize freezing and thawing.

**Synonym / Alias Names** TOM1L2|FLJ32746|target of myb1-like 2 (chicken)|target of myb1 (chicken) homolog-like 1|target of myb1 (chicken) homolog-like 2

**Accession ID** NP\_001028723.1; NP\_001076437.1

**Blocking Peptide** EBP06556

**Immunogen** Peptide with sequence CRKKPERSEDALFAL, from the C Terminus of the protein sequence according to NP\_001028723.1; NP\_001076437.1.

**Product Comments** This antibody is expected to recognise both reported isoforms.

**Peptide Sequence** CRKKPERSEDALFAL

**Purification Method** Purified from goat serum by ammonium sulphate precipitation followed by antigen affinity chromatography using the immunizing peptide.

<b>Shipping Instructions</b>	Refrigerated
<b>Predicted Species</b>	Human, Mouse, Dog
<b>Reactive Species</b>	Human
<b>Human Gene ID</b>	146691
<b>Product Grade</b>	<a href="https://prod-vector-labs-pimcore-assets.s3.us-east-1.amazonaws.com/assets/products/image/elite_medium.png">https://prod-vector-labs-pimcore-assets.s3.us-east-1.amazonaws.com/assets/products/image/elite_medium.png</a>
<b>IHC Results</b>	In paraffin embedded Human Skeletal Muscle shows variable staining from fibre to fibre. Recommended concentration, 5-10µg/ml.
<b>ELISA</b>	
<b>Detection Limit</b>	Antibody detection limit dilution 1:64000.
<b>Western Blot</b>	Approx 60kDa band observed in Human Fibroblast A431 lysates (calculated MW of 51.8kDa according to NP_653279). Recommended concentration: 0.1-1µg/ml.
<b>Application Type</b>	Pep-ELISA, WB, IHC

## DOCUMENTS

- [Data Sheet](#)

## GALLERY IMAGES

