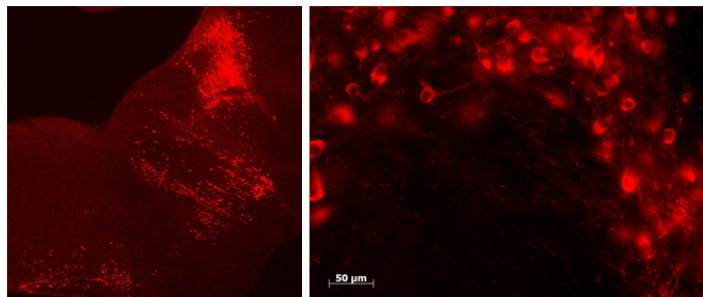


# GOAT ANTI-TPH2 (MOUSE) ANTIBODY

SKU: EB11012



## SPECIFICATIONS

**Formulation** Supplied at 0.5 mg/ml in Tris saline, 0.02% sodium azide, pH7.3 with 0.5% bovine serum albumin.

**Unit Size** 100 µg

**Storage Instructions** Aliquot and store at -20°C. Minimize freezing and thawing.

**Synonym / Alias Names** Tph2| tryptophan hydroxylase 2| tryptophan 5-monoxygenase 2| tryptophan 5-hydroxylase 2| OTTMUSP00000022885| Ntph| neuronal tryptophan hydroxylase| MGC159133| AU043594| tryptophan 5-monoxygenase 2| tryptophan 5-hydroxylase 2| neuronal tryptophan hydroxylase| OTTMUSP00000022885| Ntph| MGC159133| AU043594| tryptophan hydroxylase 2|Tph2

**Usage Summary** **Immunofluorescence:** In free-floating samples of Mouse Brain stem staining of Raphe nuclei serotonergic neurons can be seen, that is consistent with observation by different antibodies. Recommended concentration, 0.5-2µg/ml.

**Accession ID** NP\_775567.2

**Blocking Peptide** EBP11012

**Immunogen** Peptide with sequence C-SLTQNKAIKSEDK, from the internal region of the protein sequence according to NP\_775567.2.

**Peptide Sequence** C-SLTQNKAIKSEDK

**Purification Method** Purified from goat serum by ammonium sulphate precipitation followed by antigen affinity chromatography using the immunizing peptide.

**Shipping Instructions** Refrigerated

**Predicted Species** Mouse

**Reactive Species** Mouse

<b>Mouse Gene ID</b>	216343
<b>Product Grade</b>	<a href="https://prod-vector-labs-pimcore-assets.s3.us-east-1.amazonaws.com/assets/products/image/elite_medium.png">https://prod-vector-labs-pimcore-assets.s3.us-east-1.amazonaws.com/assets/products/image/elite_medium.png</a>
<b>ELISA Detection Limit</b>	Antibody detection limit dilution 1:32000.
<b>Western Blot</b>	Preliminary experiments gave an approx 85kDa band in Mouse fetal Brain lysates after 0.3µg/ml antibody staining. Please note that currently we cannot find an explanation in the literature for the band we observe given the calculated size of 55.9kDa according to NP_775567.2. The 85kDa band was successfully blocked by incubation with the immunizing peptide.
<b>Application Type</b>	Pep-ELISA, IF

## SELECTED REFERENCES

[{"pmid": 38589690, "intro": "**This antibody has been successfully used on Mouse:**", "title": "Prebiotic diet normalizes aberrant immune and behavioral phenotypes in a mouse model of autism spectrum disorder", "author": "Naika Prince, Lucia N Peralta Marzal, Anastasia Markidi, Sabbir Ahmed, Youri Adolfs, R Jeroen Pasterkamp, Himanshu Kumar, Guus Roeselers, Johan Garssen, Aletta D Kraneveld, Paula Perez-Pardo", "journal": "Acta Pharmacol Sin. 2024 Aug;45(8):1591-1603."}, {"pmid": 24881576, "intro": "**This antibody has been successfully used in IF on Mouse:**", "title": "Central serotonergic neuron deficiency in a mouse model of Zellweger syndrome.", "author": "Rahim RS, Meedeniya AC, Crane DI.", "journal": "Neuroscience. 2014 Aug 22;274:229-41."}]

## DOCUMENTS

- [Data Sheet](#)

## GALLERY IMAGES

