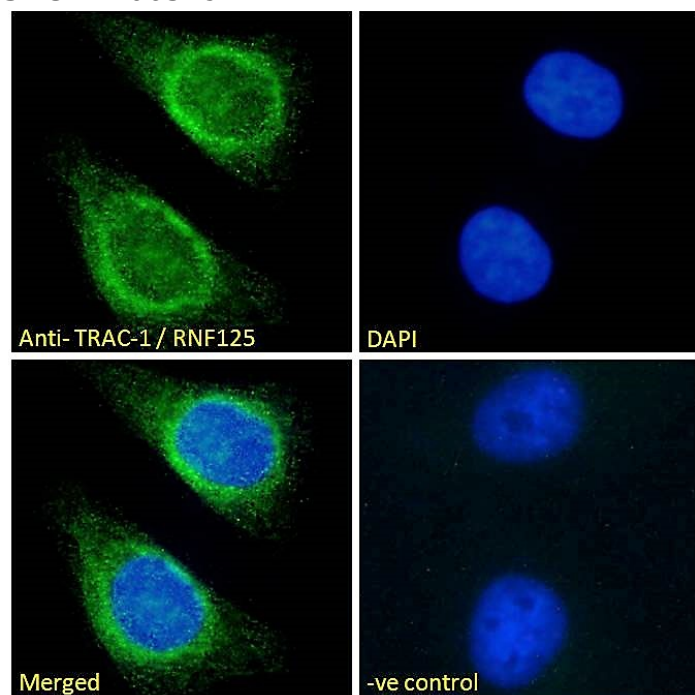


GOAT ANTI-TRAC-1 / RNF125 ANTIBODY

SKU: EB06379



SPECIFICATIONS

Formulation Supplied at 0.5 mg/ml in Tris saline, 0.02% sodium azide, pH7.3 with 0.5% bovine serum albumin.

Unit Size 100 µg

Storage Instructions Aliquot and store at -20°C. Minimize freezing and thawing.

Synonym /

Alias Names T-cell ring protein identified in activation screen|TRAC1|ring finger protein 125|MGC21737|FLJ20456|RNF125

Usage Summary **Immunofluorescence:** Strong expression of the protein seen in the endoplasmic reticulum/Golgi of HeLa cells. Recommended concentration: 10µg/ml. **Flow Cytometry:** Flow cytometric analysis of HeLa cells. Recommended concentration: 10ug/ml.

Accession ID NP_060301.2

Blocking Peptide EBP06379

Immunogen	Peptide with sequence C-RSLLLEYVNHSNTT, from the C Terminus of the protein sequence according to NP_060301.2.
Peptide Sequence	C-RSLLLEYVNHSNTT
Purification Method	Purified from goat serum by ammonium sulphate precipitation followed by antigen affinity chromatography using the immunizing peptide.
Shipping Instructions	Refrigerated
Predicted Species	Human, Mouse, Rat, Dog, Pig, Cow
Reactive Species	Human
Human Gene ID	54941
Product Grade	https://prod-vector-labs-pimcore-assets.s3.us-east-1.amazonaws.com/assets/products/image/elite_medium.png
ELISA Detection Limit	Antibody detection limit dilution 1:8000.
Application Type	Pep-ELISA, IF, FC

DOCUMENTS

- [Data Sheet](#)

GALLERY IMAGES

