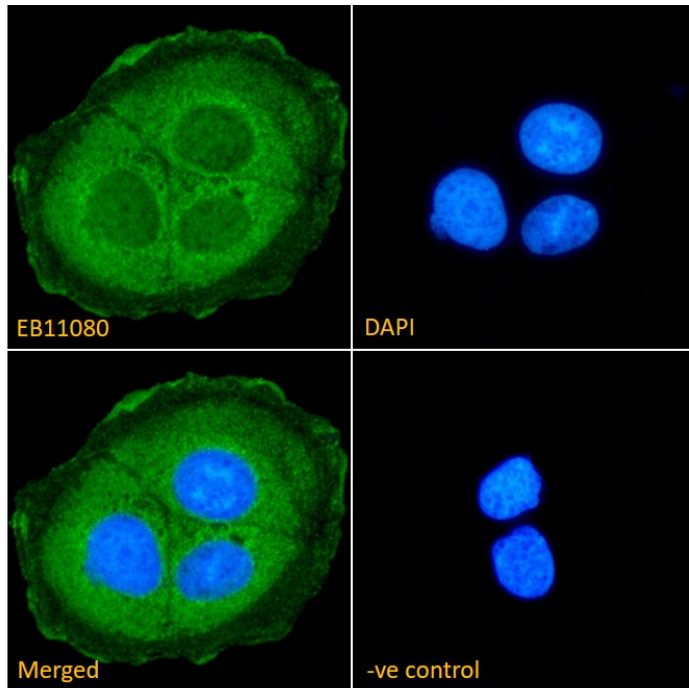




# GOAT ANTI-TRANSGLUTAMINASE 2 (AA17-29) ANTIBODY

SKU: EB11080



## SPECIFICATIONS

**Formulation** Supplied at 0.5 mg/ml in Tris saline, 0.02% sodium azide, pH7.3 with 0.5% bovine serum albumin.

**Unit Size** 100 µg

**Storage Instructions** Aliquot and store at -20°C. Minimize freezing and thawing.

**Synonym / Alias Names** TGM2| transglutaminase-2| transglutaminase H| transglutaminase C| transglutaminase 2 (C polypeptide, protein-glutamine-gamma-glutamyltransferase)| tissue transglutaminase| TGC| TGase-H| TGase-2| TGase H| TGase C| TG2| TG(C)| protein-glutamine-gamma-glutamyltransferase| protein-glutamine gamma-glutamyltransferase 2| GNAH| G-ALPHA-h| C polypeptide

**Usage Summary** <strong>Immunofluorescence:</strong> Strong expression of the protein seen in the cytoplasm and membranes of Caco-2 cells. Recommended concentration: 10µg/ml.

**Accession ID** NP\_004604.2; NP\_945189.1



<b>Blocking Peptide</b>	EBP11080
<b>Immunogen</b>	Peptide with sequence NGRDHHTADLCRE, from the N Terminus of the protein sequence according to NP_004604.2; NP_945189.1.
<b>Product Comments</b>	This antibody is expected to recognize both reported isoforms (NP_004604.2; NP_945189.1)..
<b>Peptide Sequence</b>	NGRDHHTADLCRE
<b>Purification Method</b>	Purified from goat serum by ammonium sulphate precipitation followed by antigen affinity chromatography using the immunizing peptide.
<b>Shipping Instructions</b>	Refrigerated
<b>Predicted Species</b>	Human, Mouse, Rat, Pig, Cow
<b>Reactive Species</b>	Human
<b>Human Gene ID</b>	7052
<b>Mouse Gene ID</b>	21817
<b>Rat Gene ID</b>	56083
<b>Product Grade</b>	<a href="https://prod-vector-labs-pimcore-assets.s3.us-east-1.amazonaws.com/assets/products/image/elite_medium.png">https://prod-vector-labs-pimcore-assets.s3.us-east-1.amazonaws.com/assets/products/image/elite_medium.png</a>
<b>ELISA Detection Limit</b>	Antibody detection limit dilution 1:16000.
<b>Application Type</b>	Pep-ELISA, IF

## GALLERY IMAGES

