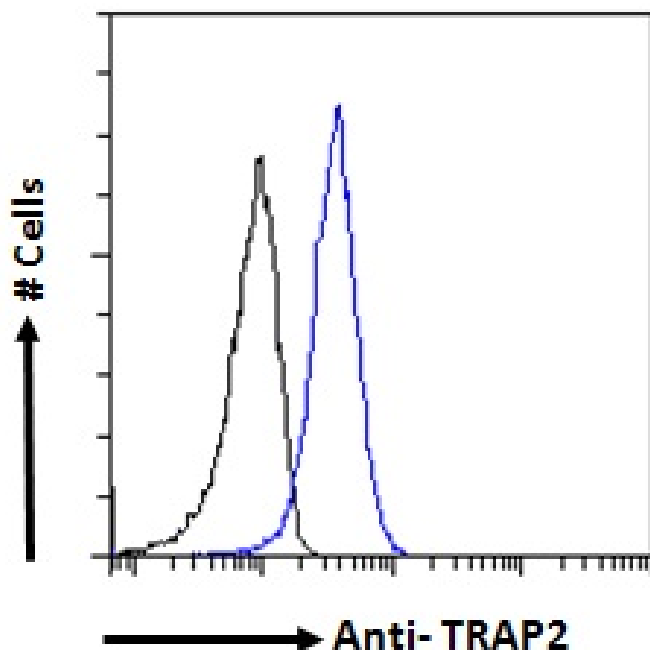


GOAT ANTI-TRAP2 / PROTEASOME SUBUNIT 26S ANTIBODY

SKU: EB06572



SPECIFICATIONS

Formulation	Supplied at 0.5 mg/ml in Tris saline, 0.02% sodium azide, pH7.3 with 0.5% bovine serum albumin.
Unit Size	100 µg
Storage Instructions	Aliquot and store at -20°C. Minimize freezing and thawing.
Synonym / Alias	tumor necrosis factor receptor-associated protein 2 26S proteasome non-ATPase regulatory subunit 2 26S proteasome regulatory subunit S2 26S proteasome subunit p97 TNFR-associated protein 2 55.11
Names	protein proteasome (prosome, macropain) 26S subunit, non-ATPase, 2 P97 S2 PSMD2 MGC14274 TRAP2
Usage Summary	Immunofluorescence: Strong expression of the protein seen in the cytoplasm of HeLa cells. Recommended concentration: 10µg/ml. Flow Cytometry: Flow cytometric analysis of HeLa cells. Recommended concentration: 10ug/ml.
Accession ID	NP_002799.3; NP_001265637.1; NP_001265638.1
Blocking Peptide	EBP06572

Immunogen	Peptide with sequence C-VILRKPNPYDL, from the C Terminus of the protein sequence according to NP_002799.3; NP_001265637.1; NP_001265638.1.
Peptide Sequence	C-VILRKPNPYDL
Purification Method	Purified from goat serum by ammonium sulphate precipitation followed by antigen affinity chromatography using the immunizing peptide.
Shipping Instructions	Refrigerated
Predicted Species	Human, Mouse, Rat, Dog, Cow
Reactive Species	Human, Mouse, Rat
Human Gene ID	5708
Product Grade	https://prod-vector-labs-pimcore-assets.s3.us-east-1.amazonaws.com/assets/products/image/elite_plus_medium.png
ELISA Detection Limit	Antibody detection limit dilution 1:64000.
Western Blot	Approx 100kDa band observed in lysates of cell lines HeLa, U251, NIH3T3 and KNRK (calculated MW of 100kDa according to Human NP_002799.3, Mouse NP_598862.1 and Rat NP_001026809.1). Recommended concentration: 0.3-1µg/ml. Primary incubation 1 hour at room temperature.
Application Type	Pep-ELISA, WB, IF, FC

DOCUMENTS

- [Data Sheet](#)

GALLERY IMAGES

