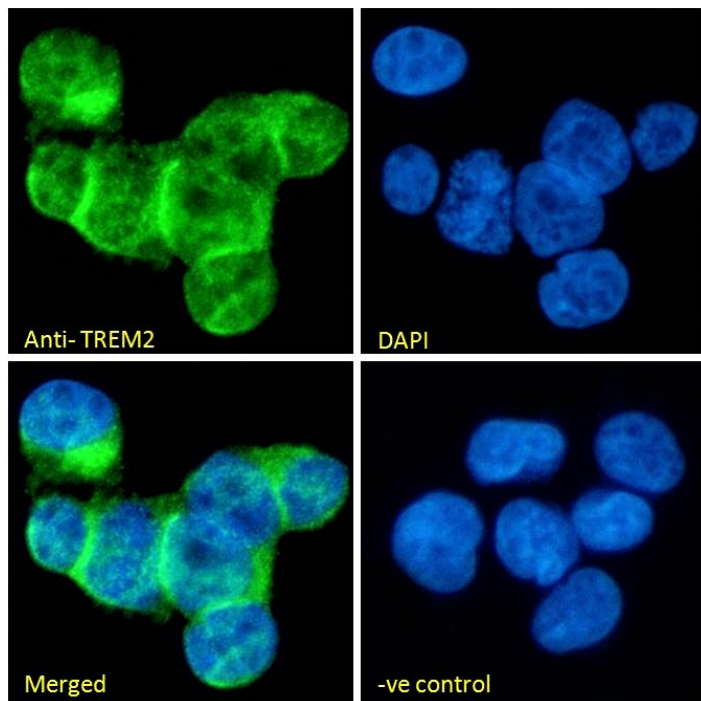


GOAT ANTI-TREM2 ANTIBODY

SKU: EB07921



SPECIFICATIONS

Formulation	Supplied at 0.5 mg/ml in Tris saline, 0.02% sodium azide, pH7.3 with 0.5% bovine serum albumin.
Unit Size	100 µg
Storage	
Instructions	Aliquot and store at -20°C. Minimize freezing and thawing.
Synonym /	triggering receptor expressed on myeloid cells
Alias	2a OTTHUMP00000039771 Trem2c Trem2b Trem2a TREM-2 triggering receptor expressed on myeloid cells
Names	2 TREM2
Usage	Immunofluorescence: Strong expression of the protein seen in U937 and HepG2 cells.
Summary	Recommended concentration: 10µg/ml. Flow Cytometry: Flow cytometric analysis of U937 cells. Recommended concentration: 10ug/ml.
Accession ID	NP_061838.1
Blocking Peptide	EBP07921

Immunogen	Peptide with sequence C-HGQKPGTHPPSELD, from the C Terminus of the protein sequence according to NP_061838.1.
Peptide Sequence	C-HGQKPGTHPPSELD
Purification Method	Purified from goat serum by ammonium sulphate precipitation followed by antigen affinity chromatography using the immunizing peptide.
Shipping Instructions	Refrigerated
Predicted Species	Human
Reactive Species	Human
Human Gene ID	54209
Product Grade	https://prod-vector-labs-pimcore-assets.s3.us-east-1.amazonaws.com/assets/products/image/elite_plus_medium.png
IHC Results	In paraffin embedded Human Lung shows staining of alveolar macrophages. Recommended concentration: 2-4µg/ml.
ELISA	
Detection Limit	Antibody detection limit dilution 1:128000.
Application Type	Pep-ELISA, IHC, IF, FC

DOCUMENTS

- [Data Sheet](#)

GALLERY IMAGES

