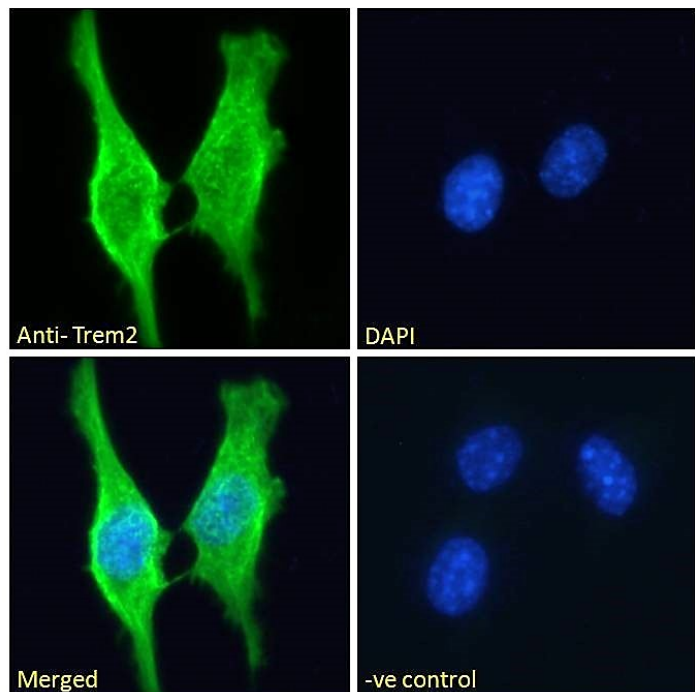


GOAT ANTI-TREM2 (MOUSE) ANTIBODY

SKU: EB07922



SPECIFICATIONS

Formulation Supplied at 0.5 mg/ml in Tris saline, 0.02% sodium azide, pH7.3 with 0.5% bovine serum albumin.

Unit Size 100 µg

Storage Instructions Aliquot and store at -20°C. Minimize freezing and thawing.

Synonym / Alias Names triggering receptor expressed on myeloid cells 2c|triggering receptor expressed on myeloid cells 2b|triggering receptor expressed on myeloid cells 2a|Trem2c|Trem2b|Trem2a|triggering receptor expressed on myeloid cells 2|Trem2

Usage Summary **Immunofluorescence:** Strong expression of the protein seen in the plasma membranes/cytoplasm of NIH3T3-L1 (adipocyte like) cells and Raw264.7 cells. Recommended concentration: 10µg/ml.

Accession ID NP_112544.1

Blocking Peptide EBP07922

Immunogen Peptide with sequence C-QVEHSTSRNQET, from the internal region of the protein sequence according to NP_112544.1.

Peptide Sequence	C-QVEHSTSRNQET
Purification Method	Purified from goat serum by ammonium sulphate precipitation followed by antigen affinity chromatography using the immunizing peptide.
Shipping Instructions	Refrigerated
Predicted Species	Mouse
Reactive Species	Mouse
Mouse Gene ID	83433
Rat Gene ID	301227
Product Grade	https://prod-vector-labs-pimcore-assets.s3.us-east-1.amazonaws.com/assets/products/image/elite_medium.png
ELISA Detection Limit	Antibody detection limit dilution 1:32000.
Western Blot	Preliminary experiments showed a band at approx 26kDa in Mouse Adrenal gland lysates after 1µg/ml antibody staining (calculated MW of 24.5kDa according to Mouse NP_112544.1 and 24.9 according to Rat NP_001100354.1). Primary incubation 1 hour at room temperature.
Application Type	Pep-ELISA, IF

DOCUMENTS

- [Data Sheet](#)

GALLERY IMAGES

