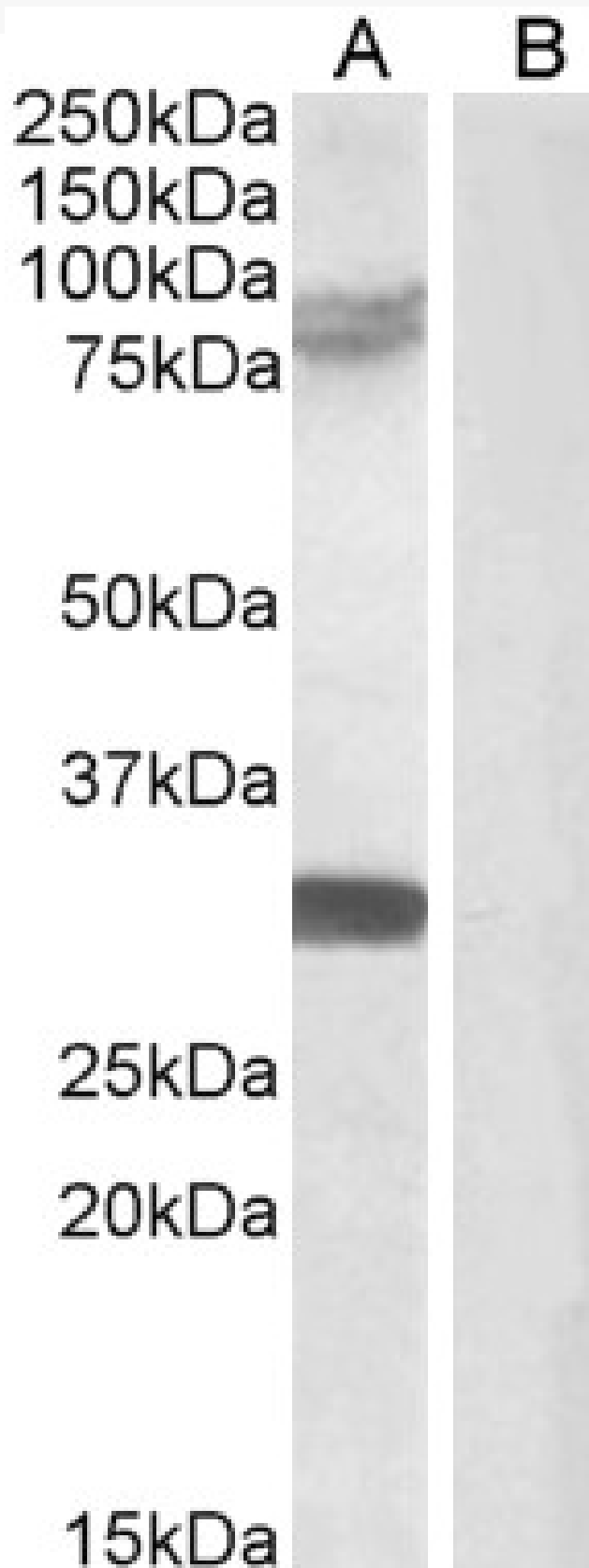


GOAT ANTI-TRIM2 ANTIBODY

SKU: EB05914



SPECIFICATIONS

Formulation	Supplied at 0.5 mg/ml in Tris saline, 0.02% sodium azide, pH7.3 with 0.5% bovine serum albumin.
Unit Size	100 µg
Storage	
Instructions	Aliquot and store at -20°C. Minimize freezing and thawing.
Synonym / Alias	tripartite motif protein TRIM2 RNF86 tripartite motif protein TRIM2 tripartite motif protein 2 KIAA0517 tripartite motif-containing 2 TRIM2
Names	
Usage	
Summary	Flow Cytometry: Flow cytometric analysis of Jurkat cells. Recommended concentration: 10ug/ml.
Accession ID	NP_056086.2; NP_001123539.1; NP_001337983.1; NP_001337984.1; NP_001337985.1; NP_001337986.1
Blocking Peptide	EBP05914
Immunogen	Peptide with sequence DSGNHCFKVYRYLQ, from the C Terminus of the protein sequence according to NP_056086.2; NP_001123539.1; NP_001337983.1; NP_001337984.1; NP_001337985.1; NP_001337986.1.
Product Comments	Cross-reactivity with TRIM3 has been demonstrated in Mouse.
Peptide Sequence	DSGNHCFKVYRYLQ
Purification Method	Purified from goat serum by ammonium sulphate precipitation followed by antigen affinity chromatography using the immunizing peptide.
Shipping Instructions	Refrigerated
Predicted Species	Human, Mouse, Rat, Dog, Cow
Reactive Species	Human, Rat
Human Gene ID	23321
Mouse Gene ID	80890
Product Grade	https://prod-vector-labs-pimcore-assets.s3.us-east-1.amazonaws.com/assets/products/image/elite_plus_medium.png
IHC Results	In paraffin embedded Human Brain (Cortex) shows cytoplasm staining in neuronal cell bodies. Recommended concentration: 6-12µg/ml.
ELISA	
Detection Limit	Antibody detection limit dilution 1:16000.
Western Blot	Approx 75-85kDa band observed in Rat Brain lysates (calculated MW of 83.3 according to Rat NP_001102022.1). An additional band of unknown identity was also consistently observed at 30kDa. This band was successfully blocked by incubation with the immunizing peptide. Recommended concentration: 0.5-1µg/ml. Primary incubation 1 hour at room temperature.

Application Type Pep-ELISA, WB, IHC, FC

DOCUMENTS

- [Data Sheet](#)

GALLERY IMAGES

