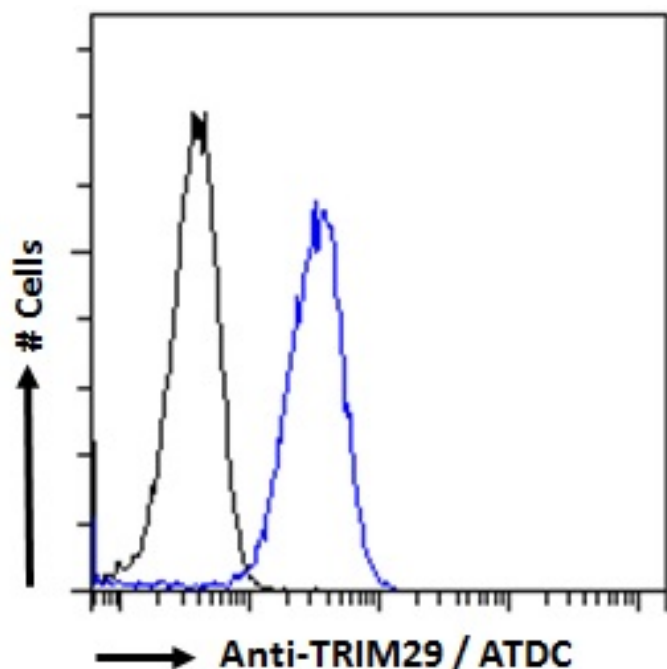


GOAT ANTI-TRIM29 / ATDC ANTIBODY

SKU: EB09814



SPECIFICATIONS

Formulation	Supplied at 0.5 mg/ml in Tris saline, 0.02% sodium azide, pH7.3 with 0.5% bovine serum albumin.
Unit Size	100 µg
Storage	
Instructions	Aliquot and store at -20°C. Minimize freezing and thawing.
Synonym / Alias	TRIM29 tripartite motif-containing 29 tripartite motif protein TRIM29 FLJ36085 ATDC ataxia-telangiectasia group D-associated protein
Names	
Usage	Immunofluorescence: Strong expression of the protein seen in the Cytoplasm and Intermediate filaments of A431 cells. Strong expression of the protein seen in the Nucleus of U2OS cells. Recommended concentration: 10µg/ml.
Summary	Flow Cytometry: Flow cytometric analysis of A431 cells. Recommended concentration: 10ug/ml.
Accession ID	NP_036233.2; NP_001317311.1
Blocking Peptide	EBP09814

Immunogen	Peptide with sequence C-EKDRIKSFTTNE, from the internal region of the protein sequence according to NP_036233.2; NP_001317311.1.
Peptide Sequence	C-EKDRIKSFTTNE
Purification Method	Purified from goat serum by ammonium sulphate precipitation followed by antigen affinity chromatography using the immunizing peptide.
Shipping Instructions	Refrigerated
Predicted Species	Human, Mouse, Rat, Cow
Reactive Species	Human
Human Gene ID	23650
Mouse Gene ID	72169
Rat Gene ID	300656
Product Grade	https://prod-vector-labs-pimcore-assets.s3.us-east-1.amazonaws.com/assets/products/image/elite_plus_medium.png
IHC Results	In paraffin embedded Human Skin shows staining of subnuclear structures and cytoplasm in keratinocytes. Recommended concentration: 3.75µg/ml.
ELISA Detection Limit	Antibody detection limit dilution 1:128000.
Western Blot	Approx 37kDa band observed in Human Peripheral Blood Mononucleocytes (PBM) and in lysates of cell lines HeLa. An additional 70kDa band was seen in some PBM lysates (calculated MW of 37.3kDa according to NP_001317311.1 (isoform 2) and 65.8kDa according to NP_036233.2 (isoform 1). Recommended concentration: 0.1-1µg/ml. Primary incubation 1 hour at room temperature.
Application Type	Pep-ELISA, WB, IF, FC, IHC

DOCUMENTS

- [Data Sheet](#)

GALLERY IMAGES

