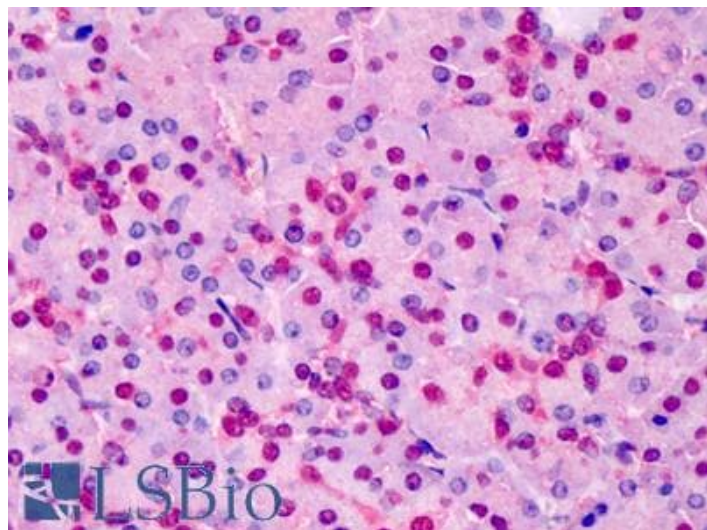


GOAT ANTI-TRIOSEPHOSPHATE ISOMERASE ANTIBODY

SKU: EB06643



SPECIFICATIONS

Formulation	Supplied at 0.5 mg/ml in Tris saline, 0.02% sodium azide, pH7.3 with 0.5% bovine serum albumin.
Unit Size	100 µg
Storage Instructions	Aliquot and store at -20°C. Minimize freezing and thawing.
Synonym / Alias Names	triose-phosphate isomerase TPID TIM HEL-S-49 epididymis secretory protein Li 49 MGC88108 TPI TPI1 triosephosphate isomerase 1
Usage Summary	Flow Cytometry: Flow cytometric analysis of HepG2 cells. Recommended concentration: 10ug/ml.
Accession ID	NP_000356.1; NP_001152759.1; NP_001244955.1
Blocking Peptide	EBP06643
Immunogen	Peptide with sequence C-LKPEFVDIINAKQ, from the C Terminus of the protein sequence according to NP_000356.1; NP_001152759.1; NP_001244955.1.
Product Comments	This antibody is expected to recognise reported isoforms 1, 2 and 3 (NP_000356.1; NP_001152759.1, NP_001244955.1.
Peptide Sequence	C-LKPEFVDIINAKQ
Purification Method	Purified from goat serum by ammonium sulphate precipitation followed by antigen affinity chromatography using the immunizing peptide.

Shipping Instructions	Refrigerated
Predicted Species	Human, Mouse, Rat, Dog, Cow
Reactive Species	Human, Mouse, Rat, Dog
Human Gene ID	7167
Mouse Gene ID	21991
Rat Gene ID	24849
Product Grade	https://prod-vector-labs-pimcore-assets.s3.us-east-1.amazonaws.com/assets/products/image/elite_plus_medium.png
IHC Results	In paraffin embedded Human Liver shows staining of the sinusoids. Recommended concentration: 2-4µg/ml. Paraffin embedded Human Pancreas. Recommended concentration: 5µg/ml.
ELISA Detection Limit	Antibody detection limit dilution 1:16000.
Western Blot	Approx 26kDa band observed in lysates of cell lines HEK293, HeLa, HepG2, Jurkat, Raw264.7. KNRK and MDCK (calculated MW of 26.7kDa according to Human NP_000356.1). Recommended concentration: 0.001-0.01µg/ml. Primary incubation 1 hour at room temperature. This antibody has been successfully used in WB on Mouse in PMID: 18544163. This antibody has been successfully used in WB on Human in PMID: 17326818.
Application Type	Pep-ELISA, WB, IHC, FC

SELECTED REFERENCES

[{"pmid": 17326818, "intro": "**This antibody has been successfully used in Western blot on Human:**", "title": "Identification of differentially regulated proteins in a patient with Leber's Congenital Amaurosis--a proteomic study.", "author": "Vorum H, Østergaard M, Rice GE, Honoré B, Bek T.", "journal": "Proteome Sci. 2007 Feb 27;5:5."}, {"pmid": 18544163, "intro": "**This antibody has been successfully used in Western blot on Mouse:**", "title": "Identification of differentially expressed proteins in spontaneous thymic lymphomas from knockout mice with deletion of p53.", "author": "Honoré B, Buus S, Claesson MH.", "journal": "Proteome Sci. 2008 Jun 10;6:18."}]

DOCUMENTS

- [Data Sheet](#)

GALLERY IMAGES

