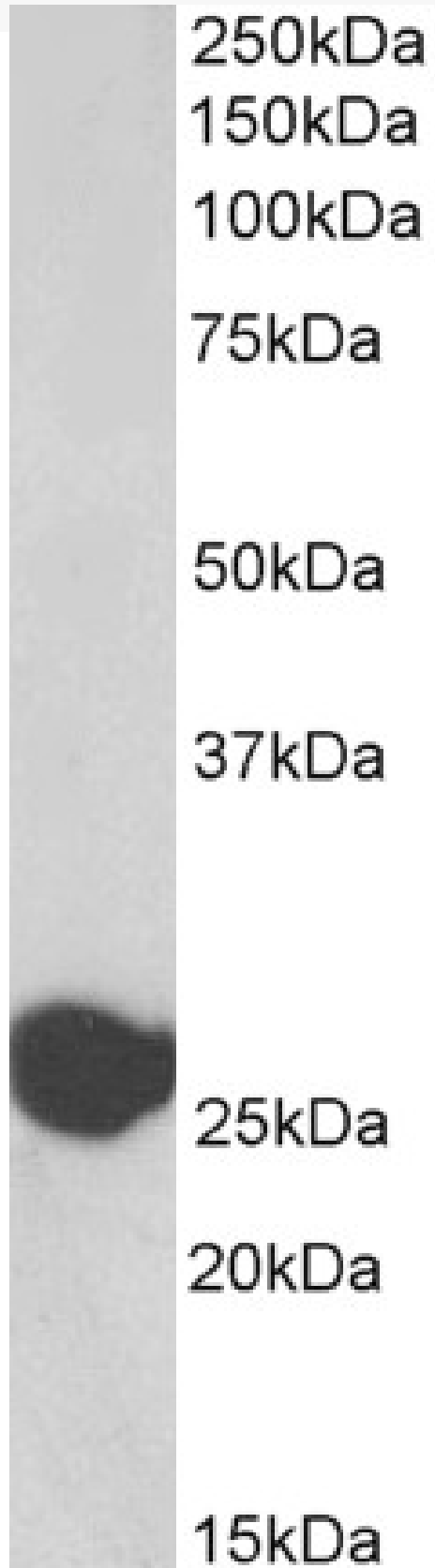


GOAT ANTI-TRIOSEPHOSPHATE ISOMERASE, BIOTINYLATED ANTIBODY

SKU: EB06643-B



SPECIFICATIONS

Formulation	Supplied at 0.5 mg/ml in Tris saline, 0.02% sodium azide, pH7.3 with 0.5% bovine serum albumin.
Unit Size	100 µg
Storage Instructions	Aliquot and store at -20°C. Minimize freezing and thawing.
Synonym / Alias Names	MGC88108 triose-phosphate isomerase epididymis secretory protein Li 49 TPID TPI TIM HEL-S-49 triosephosphate isomerase 1 TPI1
Accession ID	NP_000356.1; NP_001152759.1
Blocking Peptide	EBP06643-B
Immunogen	Peptide with sequence C-LKPEFVDIINAKQ., from the C Terminus of the protein sequence according to NP_000356.1; NP_001152759.1.
Product Comments	This antibody is expected to recognise reported isoforms 1 and 2 (NP_000356.1; NP_001152759.1).
Peptide Sequence	C-LKPEFVDIINAKQ.
Purification Method	Purified from goat serum by ammonium sulphate precipitation followed by antigen affinity chromatography using the immunizing peptide.
Shipping Instructions	Refrigerated
Predicted Species	Human, Mouse, Rat, Dog, Cow
Reactive Species	Human, Mouse
Human Gene ID	7167
Mouse Gene ID	21991
Rat Gene ID	24849
Product Grade	https://prod-vector-labs-pimcore-assets.s3.us-east-1.amazonaws.com/assets/products/image/elite_medium.png
ELISA Detection Limit	Antibody detection limit dilution 1:16000.
Western Blot	Approx 26kDa band observed in Human Liver lysates (calculated MW of 26.7kDa according to NP_000356.1). See non-biotinylated parental product's datasheet for further QC data. Recommended concentration: 0.01-0.03µg/ml.
Application Type	Pep-ELISA, WB

SELECTED REFERENCES

[{"pmid": 31951672, "intro": "**This antibody has been successfully used in Western blot on Human:**", "title": "Fluorescent Western Blotting: High Sensitivity Detection of Multiple Targets.", "author": "Berkelman T", "journal": "Curr Protoc Pharmacol. 2020 Mar;88(1):e72. doi: 10.1002/cpph.72."}]

DOCUMENTS

- [Data Sheet](#)

GALLERY IMAGES

