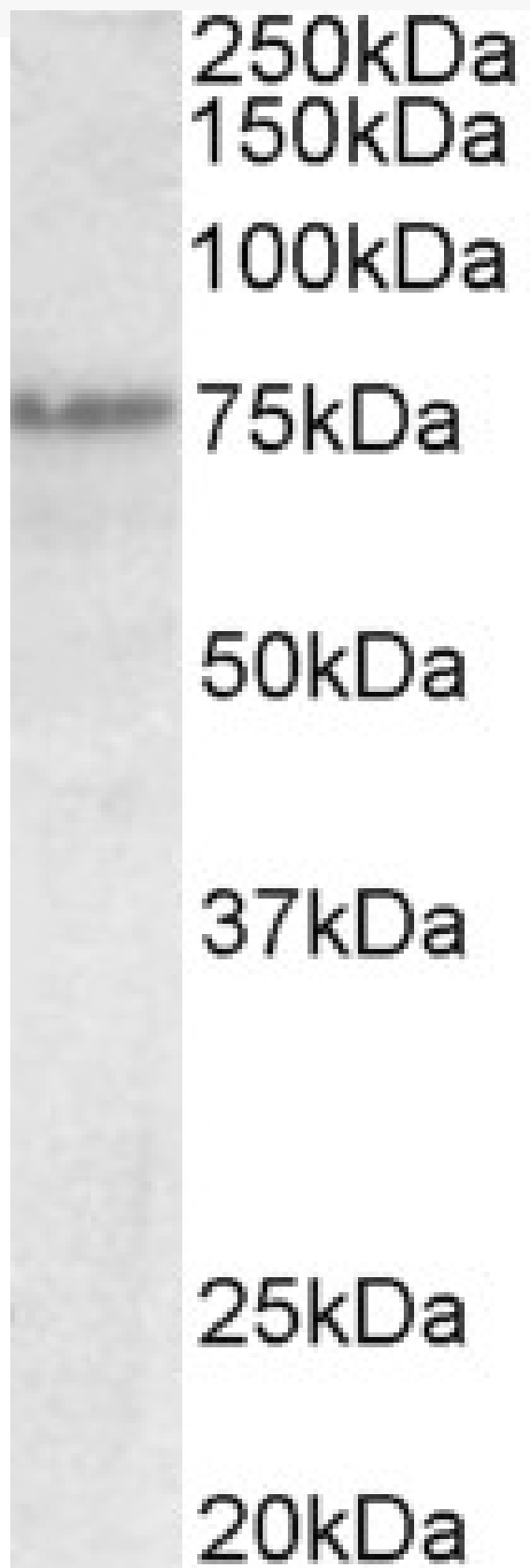


GOAT ANTI-TRP63 (MOUSE) ANTIBODY

SKU: EB11487



SPECIFICATIONS

Formulation Supplied at 0.5 mg/ml in Tris saline, 0.02% sodium azide, pH7.3 with 0.5% bovine serum albumin.

Unit Size 100 µg

Storage Instructions Aliquot and store at -20°C. Minimize freezing and thawing.

Synonym / Alias Names A1462811|Ket|P51/P63|P63|P73|Tp63|transformation related protein 63|transformation-related protein 63|Trp53rp1|Trp63|tumor protein 63

Accession ID NP_035771.1; NP_001120736.1; NP_001120734.1; NP_001120735.1; NP_001120737.1

Blocking Peptide EBP11487

Immunogen Peptide with sequence ENNAQTQFSEPQYC, from the N Terminus of the protein sequence according to NP_035771.1; NP_001120736.1; NP_001120734.1; NP_001120735.1; NP_001120737.1.

Product Comments This antibody is expected to recognize reported isoforms d, e, f, g, h. (NP_035771.1; NP_001120736.1; NP_001120734.1; NP_001120735.1; NP_001120737.1).

Peptide Sequence ENNAQTQFSEPQYC

Purification Method Purified from goat serum by ammonium sulphate precipitation followed by antigen affinity chromatography using the immunizing peptide.

Shipping Instructions Refrigerated

Predicted Species Human, Mouse, Rat, Dog, Pig

Reactive Species Human

Human Gene ID 8626

Mouse Gene ID 22061

Rat Gene ID 246334

Product Grade https://prod-vector-labs-pimcore-assets.s3.us-east-1.amazonaws.com/assets/products/image/elite_medium.png

ELISA Detection Limit Antibody detection limit dilution 1:64000.

Western Blot Approx 75kDa band observed in lysates of cell line A431 (calculated MW of 65.8kDa according to NP_035771.1). Recommended concentration: 0.3-1µg/ml.

Application Type Pep-ELISA, WB

DOCUMENTS

- [Data Sheet](#)

GALLERY IMAGES

