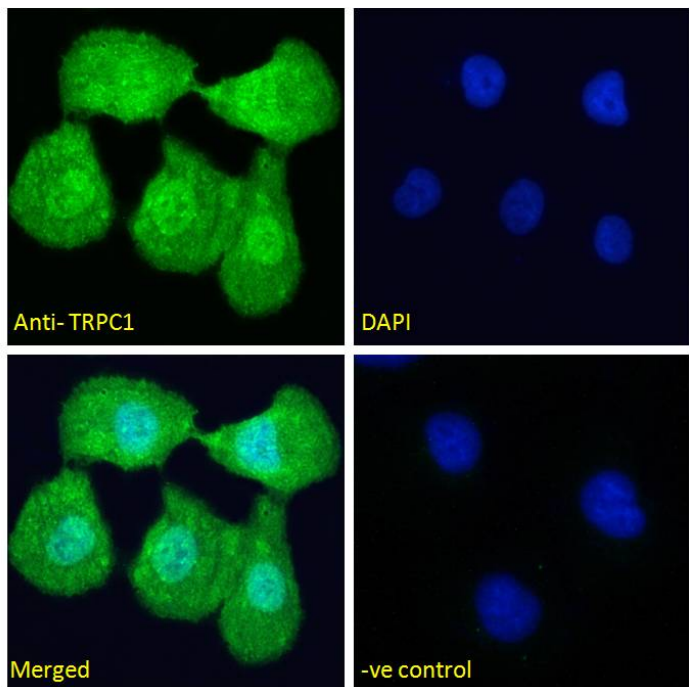


GOAT ANTI-TRPC1 ANTIBODY

SKU: EB08789



SPECIFICATIONS

Formulation	Supplied at 0.5 mg/ml in Tris saline, 0.02% sodium azide, pH7.3 with 0.5% bovine serum albumin.
Unit Size	100 µg
Storage	Aliquot and store at -20°C. Minimize freezing and thawing.
Instructions	
Synonym / Alias Names	transient receptor potential channel 1 TRP1 MGC133335 MGC133334 HTRP-1 transient receptor potential cation channel, subfamily C, member 1 TRPC1
Usage Summary	<p>Immunofluorescence: Strong expression of the protein seen in the cytoplasm/vesicles of HeLa cells. Strong expression of the protein seen in the cytoplasm and nuclei of U2OS cells. Recommended concentration: 10µg/ml.</p> <p>Flow Cytometry: Flow cytometric analysis of Jurkat cells. Recommended concentration: 10ug/ml.</p>
Accession ID	NP_003295.1; NP_001238774.1
Blocking Peptide	EBP08789

Immunogen	Peptide with sequence C-NLKQKRDENYQK, from the internal region of the protein sequence according to NP_003295.1; NP_001238774.1.
Peptide Sequence	C-NLKQKRDENYQK
Purification Method	Purified from goat serum by ammonium sulphate precipitation followed by antigen affinity chromatography using the immunizing peptide.
Shipping Instructions	Refrigerated
Predicted Species	Human, Mouse, Rat, Dog
Reactive Species	Human
Human Gene ID	7220
Product Grade	https://prod-vector-labs-pimcore-assets.s3.us-east-1.amazonaws.com/assets/products/image/elite_plus_medium.png
IHC Results	Paraffin embedded Human Prostate and Brain (Cortex). Recommended concentration: 3.75µg/ml.
ELISA	
Detection Limit	Antibody detection limit dilution 1:32000.
Application Type	Pep-ELISA, IF, FC, IHC

DOCUMENTS

- [Data Sheet](#)

GALLERY IMAGES

