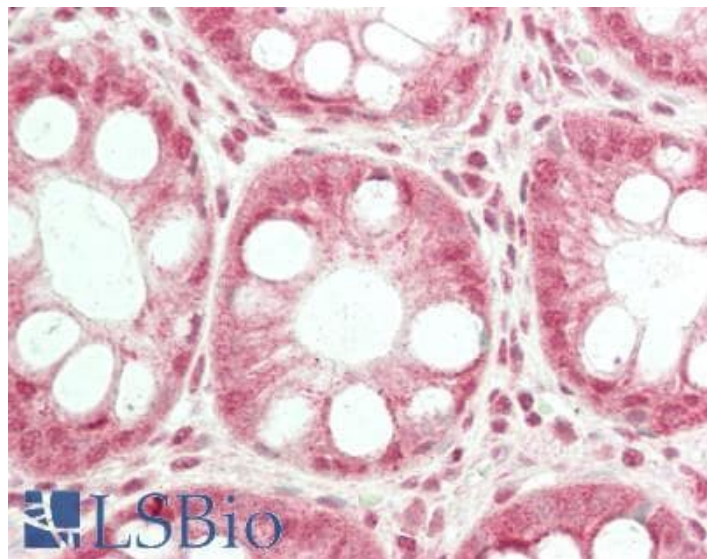


GOAT ANTI-TRPC6 (MOUSE) ANTIBODY

SKU: EB11508



SPECIFICATIONS

Formulation	Supplied at 0.5 mg/ml in Tris saline, 0.02% sodium azide, pH7.3 with 0.5% bovine serum albumin.
Unit Size	100 µg
Storage	Aliquot and store at -20°C. Minimize freezing and thawing.
Instructions	
Synonym / Alias	AV025995 calcium entry channel LLHWJM002 LLHWJM003 LLHWJM004 mtrp6 short transient receptor potential channel 6 transient receptor potential cation channel, subfamily C, member 6 transient receptor protein
Names	6 TRP-6 Trpc6 Trrp6
Accession ID	NP_038866.2
Blocking Peptide	EBP11508
Immunogen	Peptide with sequence C-QSSSTRSSEDYHLNS, from the internal region of the protein sequence according to NP_038866.2.
Peptide Sequence	C-QSSSTRSSEDYHLNS
Purification Method	Purified from goat serum by ammonium sulphate precipitation followed by antigen affinity chromatography using the immunizing peptide.
Shipping Instructions	Refrigerated

Predicted Species	Mouse, Rat
Reactive Species	Human
Mouse Gene ID	22068
Rat Gene ID	89823
Product Grade	https://prod-vector-labs-pimcore-assets.s3.us-east-1.amazonaws.com/assets/products/image/elite_medium.png
IHC Results	Paraffin embedded Human Colon. Recommended concentration: 5µg/ml.
ELISA Detection Limit	Antibody detection limit dilution 1:64000.
Western Blot	Preliminary experiments gave an approx 75kDa band in Mouse and Rat Brain and Spinal Cord lysates after 0.3µg/ml antibody staining. Please note that currently we cannot find an explanation in the literature for the band we observe given the calculated size of 107kDa according to NP_038866.2. The 75kDa band was successfully blocked by incubation with the immunizing peptide.
Application Type	Pep-ELISA, IHC

DOCUMENTS

- [Data Sheet](#)

GALLERY IMAGES

