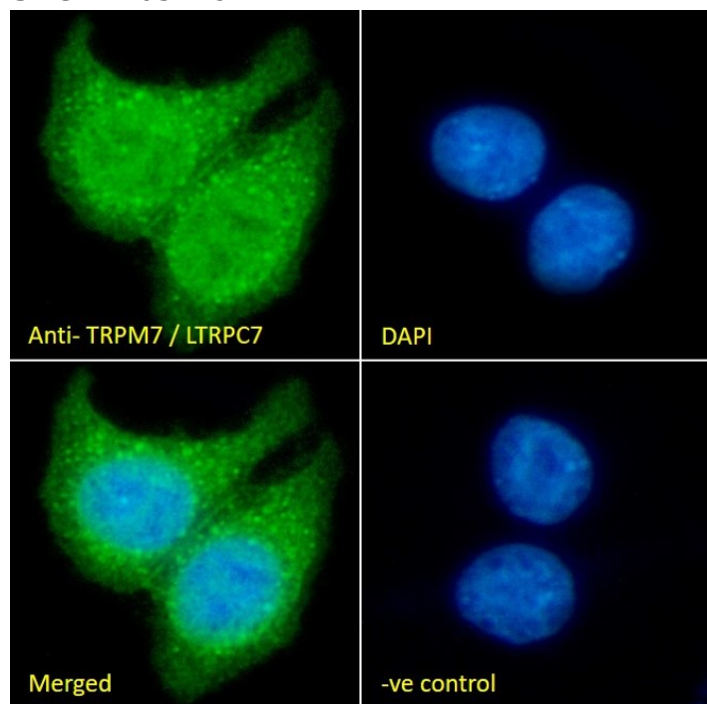


GOAT ANTI-TRPM7 / LTRPC7 ANTIBODY

SKU: EB05129



SPECIFICATIONS

Formulation Supplied at 0.5 mg/ml in Tris saline, 0.02% sodium azide, pH7.3 with 0.5% bovine serum albumin.

Unit Size 100 µg

Storage Instructions Aliquot and store at -20°C. Minimize freezing and thawing.

Synonym / Alias Names FLJ25718|homolog of mouse transient receptor potential-phospholipase C-interacting kinase CHaK hypothetical protein FLJ20117|LTRPC ion channel family member 7|TRP-PLIK|FLJ20117|LTRPC7|CHAK1|CHAK|transient receptor potential cation channel, subfamily M, member 7|TRPM7

Usage Immunofluorescence: Strong expression of the protein seen in A431 and MCF7 cells.

Summary Recommended concentration: 10µg/ml.

Accession ID NP_060142.3; NP_001288141.1

Blocking Peptide EBP05129

Immunogen Peptide with sequence C-TKESESTNSVRLML, from the C Terminus of the protein sequence according to NP_060142.3; NP_001288141.1.

Peptide Sequence	C-TKESESTNSVRLML
Purification Method	Purified from goat serum by ammonium sulphate precipitation followed by antigen affinity chromatography using the immunizing peptide.
Shipping Instructions	Refrigerated
Predicted Species	Human, Mouse, Rat, Dog, Pig
Reactive Species	Human
Human Gene ID	54822
Product Grade	https://prod-vector-labs-pimcore-assets.s3.us-east-1.amazonaws.com/assets/products/image/elite_medium.png
IHC Results	Paraffin embedded Human Kidney. Recommended concentration: 5-6µg/ml.
ELISA	
Detection Limit	Antibody detection limit dilution 1:16000.
Application Type	Pep-ELISA, IHC, IF

DOCUMENTS

- [Data Sheet](#)

GALLERY IMAGES

