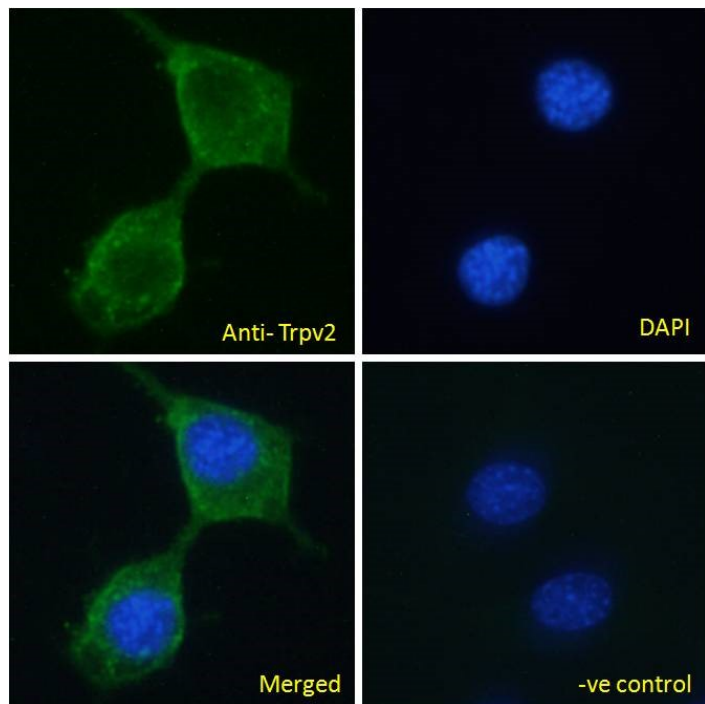


## GOAT ANTI-TRPV2 (MOUSE) ANTIBODY

SKU: EB08812



## SPECIFICATIONS

**Formulation** Supplied at 0.5 mg/ml in Tris saline, 0.02% sodium azide, pH7.3 with 0.5% bovine serum albumin.

**Unit Size** 100 µg

**Storage Instructions** Aliquot and store at -20°C. Minimize freezing and thawing.

**Synonym / Alias Names** vanilloid receptor-like protein 1|Vr1|VRL-1|OTRPC2|GRC|RP23-234K24.7|transient receptor potential cation channel, subfamily V, member 2|Trpv2

**Usage Summary** **Immunofluorescence:** Expression of the protein seen in the plasma membrane and cytoplasm of NIH3T3 cells. Recommended concentration: 10µg/ml.

**Accession ID** NP\_035836.2

**Blocking Peptide** EBP08812

**Immunogen** Peptide with sequence C-SEEDHLPLQVLQSH, from the C Terminus of the protein sequence according to NP\_035836.2.

<b>Peptide Sequence</b>	C-SEEDHLPLQVLQSH
<b>Purification Method</b>	Purified from goat serum by ammonium sulphate precipitation followed by antigen affinity chromatography using the immunizing peptide.
<b>Shipping Instructions</b>	Refrigerated
<b>Predicted Species</b>	Mouse, Rat
<b>Reactive Species</b>	Mouse
<b>Mouse Gene ID</b>	22368
<b>Rat Gene ID</b>	29465
<b>Product Grade</b>	<a href="https://prod-vector-labs-pimcore-assets.s3.us-east-1.amazonaws.com/assets/products/image/elite_medium.png">https://prod-vector-labs-pimcore-assets.s3.us-east-1.amazonaws.com/assets/products/image/elite_medium.png</a>
<b>ELISA Detection Limit</b>	Antibody detection limit dilution 1:4000.
<b>Application Type</b>	Pep-ELISA, IF

## DOCUMENTS

- [Data Sheet](#)

## GALLERY IMAGES

