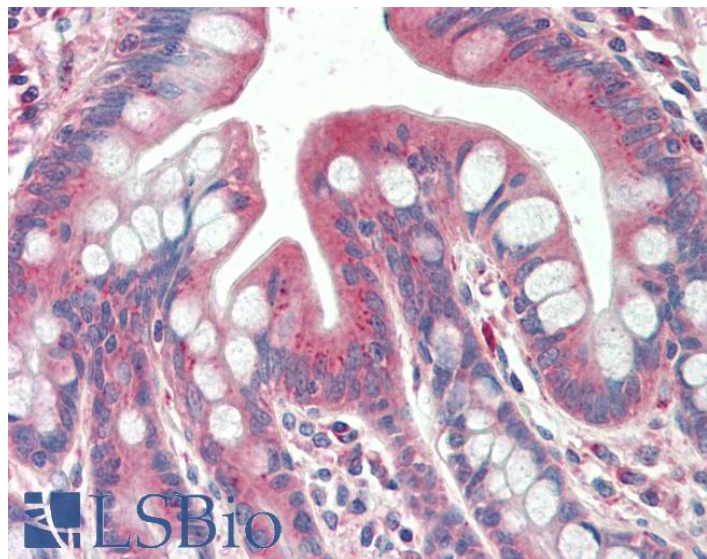


# GOAT ANTI-TXNDC11 (AA113-126) ANTIBODY

**SKU:** EB10933



## SPECIFICATIONS

**Formulation** Supplied at 0.5 mg/ml in Tris saline, 0.02% sodium azide, pH7.3 with 0.5% bovine serum albumin.

**Unit Size** 100 µg

**Storage Instructions** Aliquot and store at -20°C. Minimize freezing and thawing.

**Synonym / Alias Names** TXNDC11| thioredoxin domain containing 11| EFP1| EF-hand binding protein 1| EF-hand-binding protein 1| thioredoxin domain-containing protein 11

**Accession ID** NP\_056998.4

**Blocking Peptide** EBP10933

**Immunogen** Peptide with sequence C-QLDYAEYVRRDSE, from the internal region of the protein sequence according to NP\_056998.4.

**Peptide Sequence** C-QLDYAEYVRRDSE

**Purification Method** Purified from goat serum by ammonium sulphate precipitation followed by antigen affinity chromatography using the immunizing peptide.

**Shipping Instructions** Refrigerated

<b>Predicted Species</b>	Human
<b>Reactive Species</b>	Human
<b>Human Gene ID</b>	51061
<b>Product Grade</b>	<a href="https://prod-vector-labs-pimcore-assets.s3.us-east-1.amazonaws.com/assets/products/image/elite_medium.png">https://prod-vector-labs-pimcore-assets.s3.us-east-1.amazonaws.com/assets/products/image/elite_medium.png</a>
<b>IHC Results</b>	Paraffin embedded Human Small Intestine. Recommended concentration: 5µg/ml.
<b>ELISA</b>	
<b>Detection Limit</b>	Antibody detection limit dilution 1:16000.
<b>Western Blot</b>	Approx 100kDa band observed in Human Spleen and Thymus lysates (calculated MW of 108kDa according to NP_056998.4). Recommended concentration: 1-3µg/ml. Primary incubation was 1 hour.
<b>Application Type</b>	Pep-ELISA, WB, IHC

## DOCUMENTS

- [Data Sheet](#)

## GALLERY IMAGES

