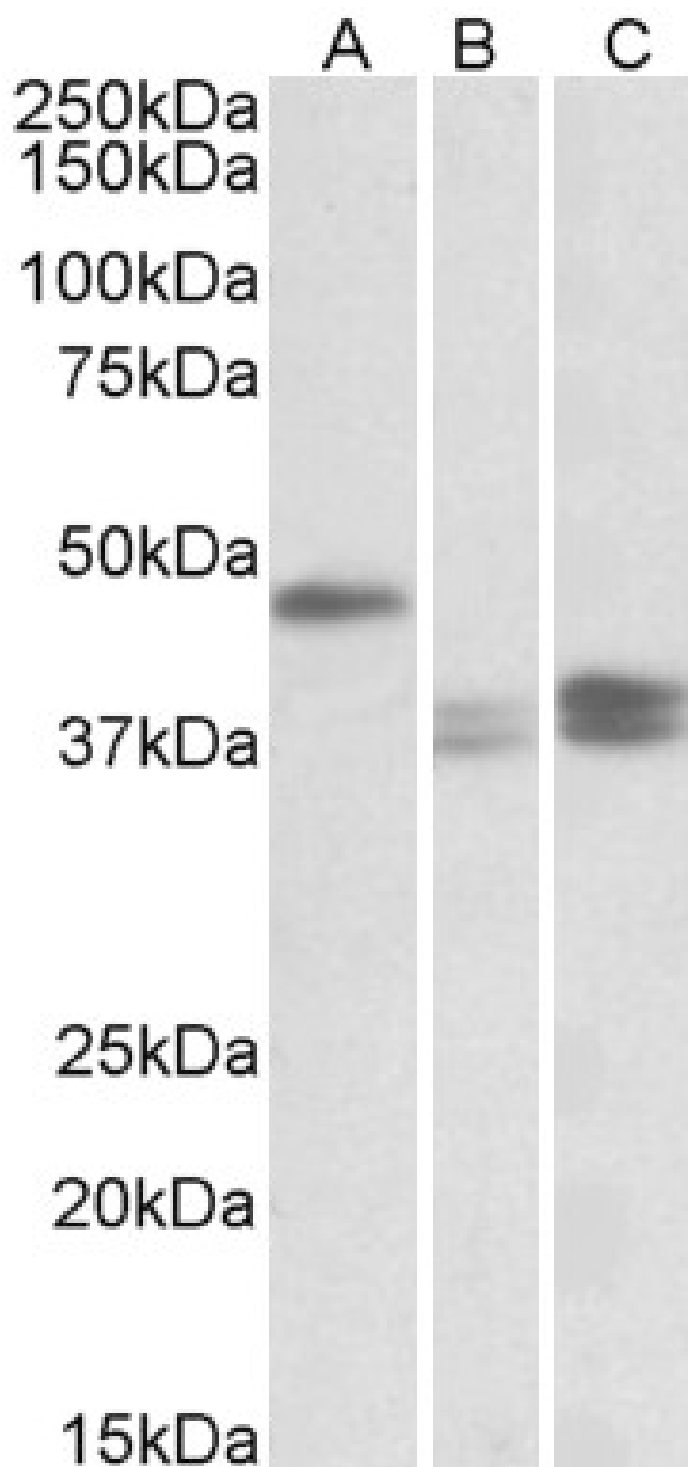


## GOAT ANTI-TXNDC5 (AA269-282) ANTIBODY

SKU: EB10878



## SPECIFICATIONS

<b>Formulation</b>	Supplied at 0.5 mg/ml in Tris saline, 0.02% sodium azide, pH7.3 with 0.5% bovine serum albumin.
<b>Unit Size</b>	100 µg
<b>Storage Instructions</b>	Aliquot and store at -20°C. Minimize freezing and thawing.
<b>Synonym / Alias Names</b>	thioredoxin-like protein p46 thioredoxin related protein thioredoxin domain-containing protein 5 protein disulfide isomerase family A, member 15 endoplasmic reticulum protein ERp46 endothelial protein disulphide isomerase endoplasmic reticulum resident protein 46 ER protein 46 UNQ364 PDIA15 MGC3178 Hcc-2 EndoPDI ERP46 thioredoxin domain containing 5 (endoplasmic reticulum) TXNDC5
<b>Accession ID</b>	NP_110437.2; NP_001139021.1
<b>Blocking Peptide</b>	EBP10878
<b>Immunogen</b>	Peptide with sequence C-RDGKKVDQYKGKRD, from the internal region of the protein sequence according to NP_110437.2; NP_001139021.1.
<b>Product Comments</b>	This antibody is expected to recognize both reported isoforms (NP_110437.2; NP_001139021.1).
<b>Peptide Sequence</b>	C-RDGKKVDQYKGKRD
<b>Purification Method</b>	Purified from goat serum by ammonium sulphate precipitation followed by antigen affinity chromatography using the immunizing peptide.
<b>Shipping Instructions</b>	Refrigerated
<b>Predicted Species</b>	Human, Mouse, Cow
<b>Reactive Species</b>	Human, Mouse
<b>Human Gene ID</b>	81567
<b>Mouse Gene ID</b>	105245
<b>Product Grade</b>	<a href="https://prod-vector-labs-pimcore-assets.s3.us-east-1.amazonaws.com/assets/products/image/elite_medium.png">https://prod-vector-labs-pimcore-assets.s3.us-east-1.amazonaws.com/assets/products/image/elite_medium.png</a>
<b>IHC Results</b>	Paraffin embedded Human Small Intestine. Recommended concentration: 3.75µg/ml.
<b>ELISA Detection Limit</b>	Antibody detection limit dilution 1:64000.
<b>Western Blot</b>	Approx 50+38kDa bands observed in Human Lymph Nodes lysates (calculated MW of 47.6kDa according to NP_110437.2 and of 36.2kDa according to NP_001139021.1). A 48kDa band was observed in Mouse Lymph Node while a 37-38kDa doublet was observed in Mouse Stomach lysates and in Mouse Intestine lysates. Recommended concentration: 0.03-0.1µg/ml. Primary incubation was 1 hour.

**Application**  
**Type**      Pep-ELISA, WB, IHC

## DOCUMENTS

- [Data Sheet](#)

## GALLERY IMAGES

