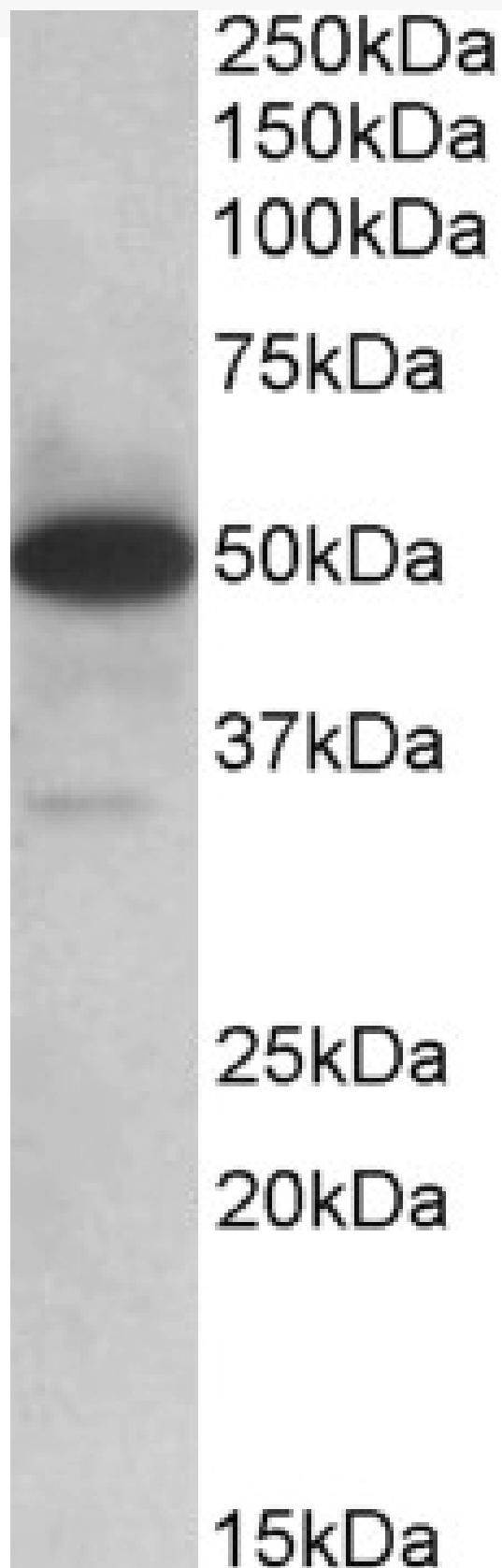


GOAT ANTI-TXNDC5 (AA281-295) ANTIBODY

SKU: EB10879



SPECIFICATIONS

Formulation	Supplied at 0.5 mg/ml in Tris saline, 0.02% sodium azide, pH7.3 with 0.5% bovine serum albumin.
Unit Size	100 µg
Storage Instructions	Aliquot and store at -20°C. Minimize freezing and thawing.
Synonym / Alias Names	TXNDC5 thioredoxin domain containing 5 (endoplasmic reticulum) ERP46 EndoPDI Hcc-2 MGC3178 PDIA15 UNQ364 ER protein 46 endoplasmic reticulum protein ERP46 endoplasmic reticulum resident protein 46 endothelial protein disulphide isomerase protein disulfide isomerase family A, member 15 thioredoxin domain-containing protein 5 thioredoxin related protein thioredoxin-like protein p46
Accession ID	NP_110437.2; NP_001139021.1
Blocking Peptide	EBP10879
Immunogen	Peptide with sequence C-RDLESLREYVESQLQ, from the internal region of the protein sequence according to NP_110437.2; NP_001139021.1.
Product Comments	This antibody is expected to recognize both reported isoforms (NP_110437.2; NP_001139021.1).
Peptide Sequence	C-RDLESLREYVESQLQ
Purification Method	Purified from goat serum by ammonium sulphate precipitation followed by antigen affinity chromatography using the immunizing peptide.
Shipping Instructions	Refrigerated
Predicted Species	Human, Mouse, Cow
Reactive Species	Human, Mouse
Human Gene ID	81567
Mouse Gene ID	105245
Product Grade	https://prod-vector-labs-pimcore-assets.s3.us-east-1.amazonaws.com/assets/products/image/elite_medium.png
IHC Results	Paraffin embedded Human Small Intestine. Recommended concentration: 3.75µg/ml.
ELISA Detection Limit	Antibody detection limit dilution 1:16000.
Western Blot	Approx 50kDa plus faint 35kDa bands observed in Human Lymph Nodes lysates and 48kDa in Mouse Lymph Node and in Mouse Intestine lysates (calculated MW of 47.6kDa according to Human NP_110437.2, 46.4kDa to Mouse NP_663342.3) and of 36.2kDa according to Human NP_001139021.1. Recommended concentration: 0.1-0.3µg/ml. Primary incubation was 1 hour.
Application Type	Pep-ELISA, WB, IHC

DOCUMENTS

- [Data Sheet](#)

GALLERY IMAGES

