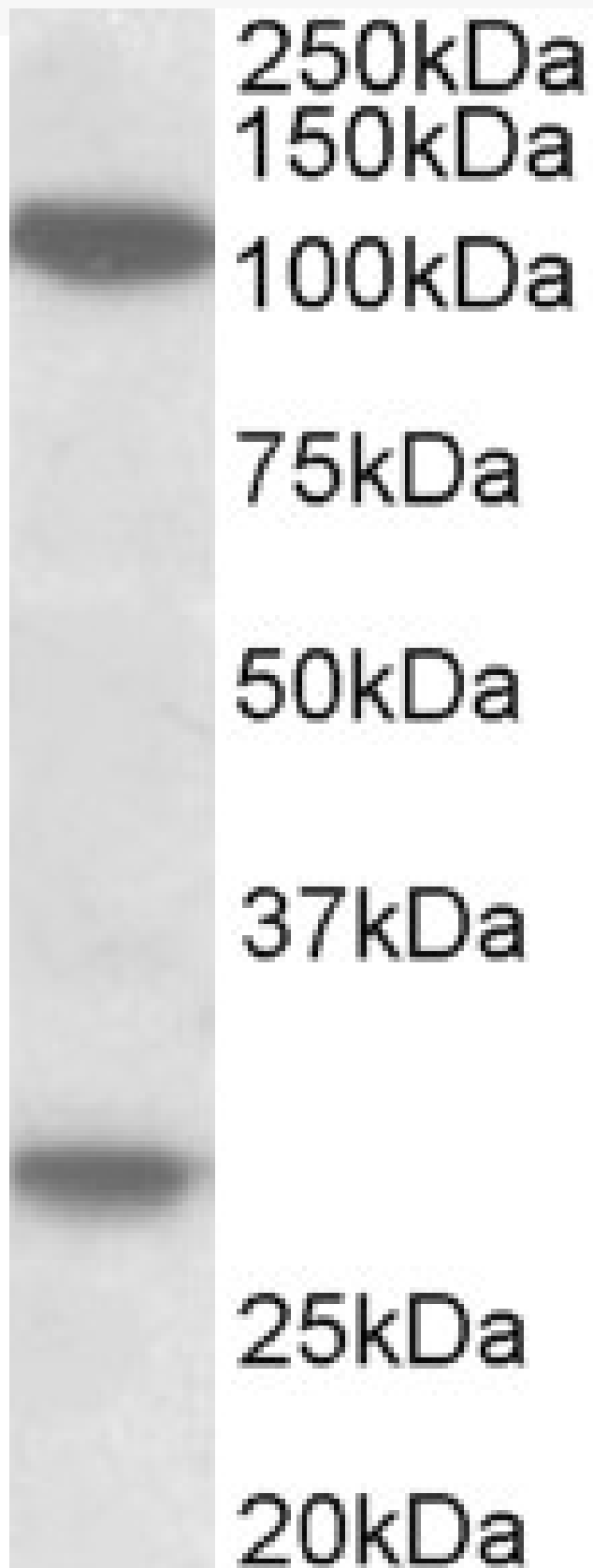


GOAT ANTI-UBINUCLEIN 1 / UBINUCLEIN 2 ANTIBODY

SKU: EB11600



SPECIFICATIONS

Formulation	Supplied at 0.5 mg/ml in Tris saline, 0.02% sodium azide, pH7.3 with 0.5% bovine serum albumin.
Unit Size	100 µg
Storage Instructions	Aliquot and store at -20°C. Minimize freezing and thawing.
Synonym / Alias Names	HIRA-binding protein OTTHUMP00000159925 OTTHUMP00000159926 ubinnuclein 1 ubinnuclein-1 ubiquitously expressed nuclear protein UBN1 VT VT4
Accession ID	NP_058632.2
Blocking Peptide	EBP11600
Immunogen	Peptide with sequence C-DNSEAYDELVPASLT, from the internal region of the protein sequence according to NP_058632.2.
Product Comments	Reported variants represent identical protein: NP_058632.2, NP_001072982.1.
Peptide Sequence	C-DNSEAYDELVPASLT
Purification Method	Purified from goat serum by ammonium sulphate precipitation followed by antigen affinity chromatography using the immunizing peptide.
Shipping Instructions	Refrigerated
Predicted Species	Human, Mouse, Rat, Dog, Pig, Cow, Zebrafish
Reactive Species	Human
Human Gene ID	29855
Mouse Gene ID	170644
Rat Gene ID	302935
Product Grade	https://prod-vector-labs-pimcore-assets.s3.us-east-1.amazonaws.com/assets/products/image/elite_medium.png
ELISA Detection Limit	Antibody detection limit dilution 1:128000.
Western Blot	Approx 120kDa band observed in lysates of cell line MOLT4 (calculated MW of 122kDa according to NP_058632.2). Recommended concentration: 1-3µg/ml. An additional band of unknown identity was also consistently observed at 28kDa. This band was successfully blocked by incubation with the immunizing peptide. We would appreciate any feedback from people in the field - have any such results been reported with other antibodies/lysates? Have any further splice variants/modified forms been reported?
Application Type	Pep-ELISA, WB

DOCUMENTS

- [Data Sheet](#)

GALLERY IMAGES

