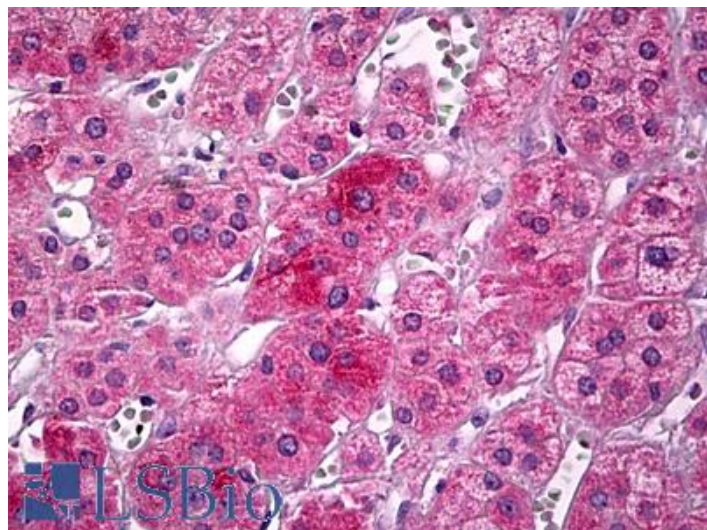


GOAT ANTI-UBP1 ANTIBODY

SKU: EB09790



SPECIFICATIONS

Formulation Supplied at 0.5 mg/ml in Tris saline, 0.02% sodium azide, pH7.3 with 0.5% bovine serum albumin.

Unit Size 100 µg

Storage Instructions Aliquot and store at -20°C. Minimize freezing and thawing.

Synonym / Alias Names DKFZp686L1745|LBP1A|LBP-1a|LBP1B|LBP-1B|transcription factor LBP-1|upstream binding protein 1 (LBP-1a)|UBP1

Accession ID NP_055332.3; NP_001121632.1

Blocking Peptide EBP09790

Immunogen Peptide with sequence C-PNHQGDGASQTSGE, from the internal region of the protein sequence according to NP_055332.3; NP_001121632.1.

Product Comments Reported variants represent identical protein: NP_001121633.1, NP_055332.3.

Peptide Sequence C-PNHQGDGASQTSGE

Purification Method Purified from goat serum by ammonium sulphate precipitation followed by antigen affinity chromatography using the immunizing peptide.

Shipping Instructions	Refrigerated
Predicted Species	Human, Mouse, Rat, Dog
Reactive Species	Human
Human Gene ID	7342
Mouse Gene ID	22221
Rat Gene ID	301038
Product Grade	https://prod-vector-labs-pimcore-assets.s3.us-east-1.amazonaws.com/assets/products/image/elite_medium.png
IHC Results	Paraffin embedded Human Adrenal Medulla. Recommended concentration: 10µg/ml.
ELISA	
Detection Limit	Antibody detection limit dilution 1:2000.
Western Blot	Preliminary experiments in Human Kidney, Human Adrenal gland, HeLa and HepG2 lysates gave no specific signal but low background (at antibody concentration up to 2µg/ml).
Application Type	Pep-ELISA, IHC

DOCUMENTS

- [Data Sheet](#)

GALLERY IMAGES

