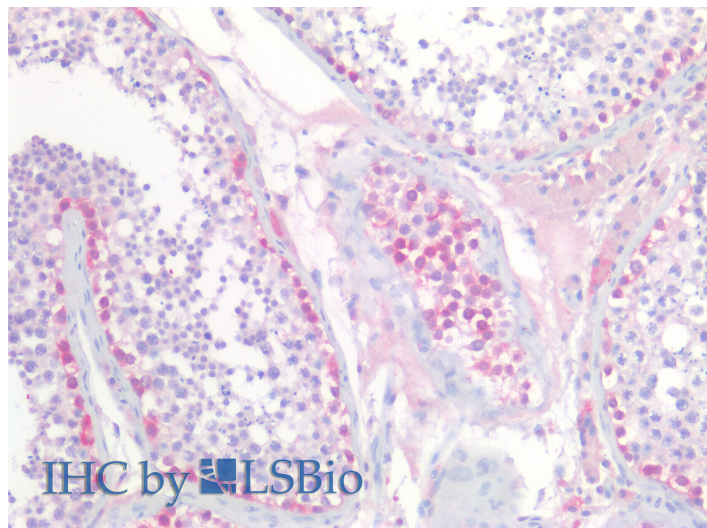


GOAT ANTI-UCHL1 (AA 211-221) ANTIBODY

SKU: EB10220



SPECIFICATIONS

Formulation Supplied at 0.5 mg/ml in Tris saline, 0.02% sodium azide, pH7.3 with 0.5% bovine serum albumin.

Unit Size 100 µg

Storage Instructions Aliquot and store at -20°C. Minimize freezing and thawing.

Synonym / Alias Names UCHL1|Uch-L1|ubiquitin C-terminal hydrolase|ubiquitin carboxyl-terminal esterase L1 (ubiquitin thiolesterase)|ubiquitin carboxyl-terminal esterase L1|PGP95|PGP9.5|PARK5|neuron cytoplasmic protein 9.5

Accession ID NP_004172.2

Blocking Peptide EBP10220

Immunogen Peptide with sequence EVRFSVALCK, from the C Terminus of the protein sequence according to NP_004172.2.

Peptide Sequence EVRFSVALCK

Purification Method Purified from goat serum by ammonium sulphate precipitation followed by antigen affinity chromatography using the immunizing peptide.

Shipping Instructions Refrigerated

Predicted Species Human, Mouse, Rat, Dog, Pig, Cow

Reactive Species	Human, Mouse, Rat
Human Gene ID	7345
Mouse Gene ID	22223
Rat Gene ID	29545
Product Grade	https://prod-vector-labs-pimcore-assets.s3.us-east-1.amazonaws.com/assets/products/image/elite_medium.png
IHC Results	Paraffin embedded Human Testis. Recommended concentration: 5µg/ml.
ELISA Detection Limit	Antibody detection limit dilution 1:1000.
Western Blot	Approx 26kDa band observed in Human Brain (Hippocampus) and Mouse and Rat Brain lysates (calculated MW of 24.8kDa according to Human NP_004172.2, Mouse NP_035800.2 and Rat NP_058933.2). Recommended concentration: 0.01-0.03µg/ml.
Application Type	Pep-ELISA, WB, IHC

DOCUMENTS

- [Data Sheet](#)

GALLERY IMAGES

