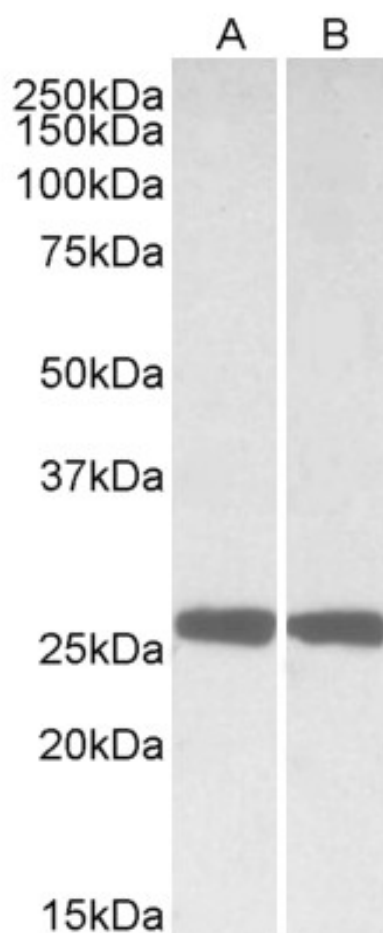


GOAT ANTI-UCHL1 (AA 58-68) ANTIBODY

SKU: EB10219



SPECIFICATIONS

Formulation	Supplied at 0.5 mg/ml in Tris saline, 0.02% sodium azide, pH7.3 with 0.5% bovine serum albumin.
Unit Size	100 µg
Storage Instructions	Aliquot and store at -20°C. Minimize freezing and thawing.
Synonym / Alias Names	UCHL1 Uch-L1 ubiquitin C-terminal hydrolase ubiquitin carboxyl-terminal esterase L1 (ubiquitin thiolesterase) ubiquitin carboxyl-terminal esterase L1 PGP95 PGP9.5 PARK5 neuron cytoplasmic protein 9.5
Accession ID	NP_004172.2
Blocking Peptide	EBP10219
Immunogen	Peptide with sequence C-QHENFRKKQIE, from the internal region of the protein sequence according to NP_004172.2.
Peptide Sequence	C-QHENFRKKQIE
Purification Method	Purified from goat serum by ammonium sulphate precipitation followed by antigen affinity chromatography using the immunizing peptide.
Shipping Instructions	Refrigerated
Predicted Species	Human, Mouse, Rat, Dog, Pig, Cow
Reactive Species	Human, Mouse, Rat
Human Gene ID	7345
Mouse Gene ID	22223
Rat Gene ID	29545
Product Grade	https://prod-vector-labs-pimcore-assets.s3.us-east-1.amazonaws.com/assets/products/image/elite_medium.png
IHC Results	Paraffin embedded Human Brain (Cortex). Recommended concentration: 2.5µg/ml.
ELISA	
Detection Limit	Antibody detection limit dilution 1:16000.
Western Blot	Approx 26kDa band observed in Human Brain (Cerebellum and Hippocampus) and Mouse and Rat Brain lysates (calculated MW of 24.8kDa according to Human NP_004172.2, Mouse NP_035800.2 and Rat NP_058933.2). Recommended concentration: 0.01-0.03µg/ml.
Application Type	Pep-ELISA, WB, IHC

DOCUMENTS

- [Data Sheet](#)

GALLERY IMAGES

