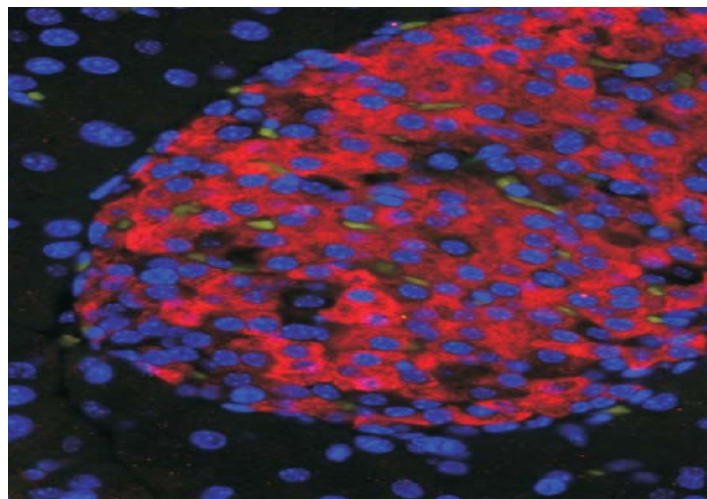


GOAT ANTI-UNC5C ANTIBODY

SKU: EB09218



SPECIFICATIONS

Formulation Supplied at 0.5 mg/ml in Tris saline, 0.02% sodium azide, pH7.3 with 0.5% bovine serum albumin.

Unit Size 100 µg

Storage Instructions Aliquot and store at -20°C. Minimize freezing and thawing.

Synonym / Alias Names unc5C|unc5 (C.elegans homolog) c|homolog of C. elegans transmembrane receptor Unc5|UNC5H3|unc-5 homolog C (C. elegans)|UNC5C

Usage Summary **Immunofluorescence:** Staining of paraffin embedded endocrine islets (red) in adult Mouse Pancreas. Nuclear staining in blue and ductal cell staining in green. Data obtained from a customer.

Accession ID NP_003719.2

Blocking Peptide EBP09218

Immunogen Peptide with sequence NCTVSEPTGID, from the internal region of the protein sequence according to NP_003719.2.

Peptide Sequence NCTVSEPTGID

Purification Method Purified from goat serum by ammonium sulphate precipitation followed by antigen affinity chromatography using the immunizing peptide.

Shipping Instructions Refrigerated

Predicted Species	Human, Mouse, Dog
Reactive Species	Human, Mouse
Human Gene ID	8633
Mouse Gene ID	22253
Product Grade	https://prod-vector-labs-pimcore-assets.s3.us-east-1.amazonaws.com/assets/products/image/elite_medium.png
IHC Results	In paraffin embedded Human Cerebral Cortex shows staining of some neuronal bodies plus intense axonal staining. Recommended concentration: 3-5µg/ml.
ELISA	
Detection Limit	Antibody detection limit dilution 1:32000.
Western Blot	Preliminary experiments in Human and Mouse Brain lysates gave no specific signal but low background (at antibody concentration up to 1µg/ml).
Application Type	Pep-ELISA, IF, IHC

DOCUMENTS

- [Data Sheet](#)

GALLERY IMAGES

