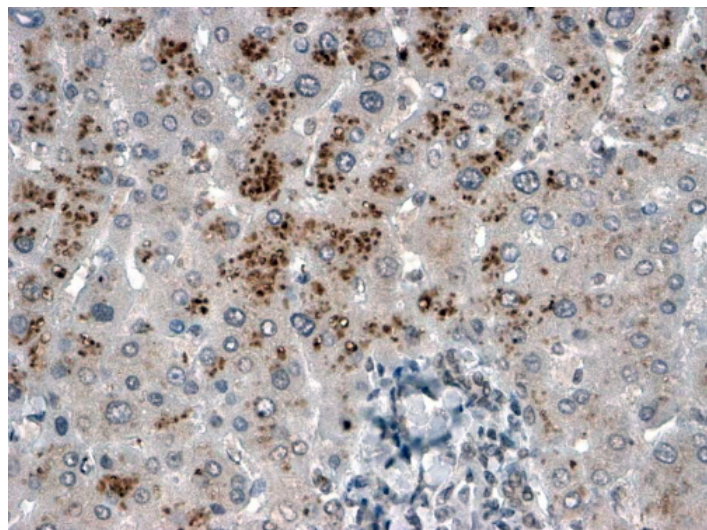


# GOAT ANTI-USP15 ANTIBODY

**SKU:** EB05991



## SPECIFICATIONS

**Formulation** Supplied at 0.5 mg/ml in Tris saline, 0.02% sodium azide, pH7.3 with 0.5% bovine serum albumin.

**Unit Size** 100 µg

**Storage Instructions** Aliquot and store at -20°C. Minimize freezing and thawing.

**Synonym / Alias Names** MGC74854|MGC149838|MGC131982|ubiquitin specific peptidase 15|deubiquitinating enzyme|KIAA0529|UNPH4|ubiquitin specific protease 15|USP15

**Accession ID** NP\_006304.1

**Blocking Peptide** EBP05991

**Immunogen** Peptide with sequence NDIENENCMHTN, from the C Terminus of the protein sequence according to NP\_006304.1.

**Peptide Sequence** NDIENENCMHTN

**Purification Method** Purified from goat serum by ammonium sulphate precipitation followed by antigen affinity chromatography using the immunizing peptide.

**Shipping Instructions** Refrigerated

|                          |   |
|--------------------------|---|
| <b>Predicted Species</b> | Human, Mouse, Rat, Dog, Pig, Cow  |
| <b>Reactive Species</b>  | Human   |
| <b>Human Gene ID</b>     | 9958  |
| <b>Product Grade</b>     | <a href="https://prod-vector-labs-pimcore-assets.s3.us-east-1.amazonaws.com/assets/products/image/elite_medium.png">https://prod-vector-labs-pimcore-assets.s3.us-east-1.amazonaws.com/assets/products/image/elite_medium.png</a> |
| <b>IHC Results</b>       | In paraffin embedded Human Liver shows patterned intracellular staining in hepatocytes. Recommended concentration, 2.5-3.8µg/ml.  |
| <b>ELISA</b>             |   |
| <b>Detection Limit</b>   | Antibody detection limit dilution 1:2000.   |
| <b>Application Type</b>  | Pep-ELISA, IHC  |

## DOCUMENTS

- [Data Sheet](#)

## GALLERY IMAGES

