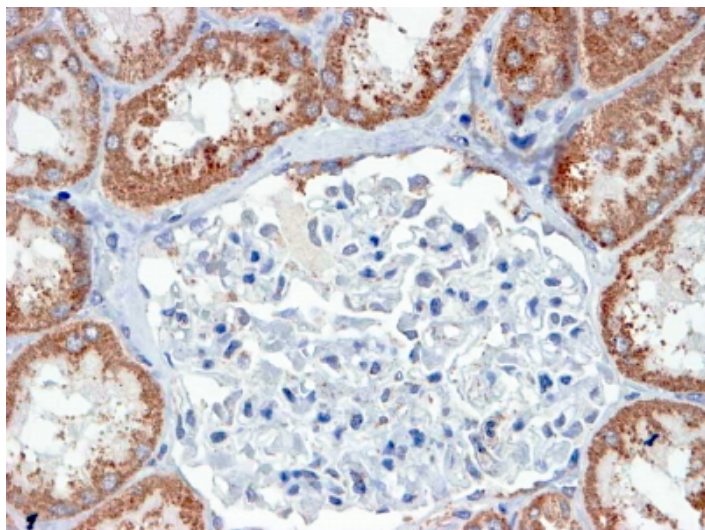


GOAT ANTI-USP16 / UBP-M ANTIBODY

SKU: EB05992



SPECIFICATIONS

Formulation Supplied at 0.5 mg/ml in Tris saline, 0.02% sodium azide, pH7.3 with 0.5% bovine serum albumin.

Unit Size 100 µg

Storage Instructions Aliquot and store at -20°C. Minimize freezing and thawing.

Synonym / Alias Names ubiquitin-specific processing protease 16|ubiquitin thiolesterase 16|ubiquitin carboxyl-terminal hydrolase 16|deubiquitinating enzyme 16|UBP-M|ubiquitin specific peptidase 16|human ubiquitin processing protease|Ubp-M|ubiquitin specific protease 16|USP16

Accession ID NP_006438.1; NP_001001992.1

Blocking Peptide EBP05992

Immunogen Peptide with sequence GKKRTKGKTPIDD-C, from the N Terminus of the protein sequence according to NP_006438.1; NP_001001992.1.

Product Comments This antibody is expected to recognise isoform a (NP_006438.1) and isoform b (NP_001001992.1). Reported variants represent identical protein (NP_006438.1; NP_001027582.1).

Peptide Sequence GKKRTKGKTPIDD-C

Purification Method Purified from goat serum by ammonium sulphate precipitation followed by antigen affinity chromatography using the immunizing peptide.

Shipping Instructions	Refrigerated
Predicted Species	Human, Mouse, Rat, Dog, Pig, Cow
Reactive Species	Human
Human Gene ID	10600
Product Grade	https://prod-vector-labs-pimcore-assets.s3.us-east-1.amazonaws.com/assets/products/image/elite_medium.png
IHC Results	In paraffin embedded Human Kidney shows textured cytoplasm staining in the convoluted tubules. Recommended concentration, 4-6µg/ml.
ELISA	
Detection Limit	Antibody detection limit dilution 1:32000.
Application Type	Pep-ELISA, IHC

DOCUMENTS

- [Data Sheet](#)

GALLERY IMAGES

