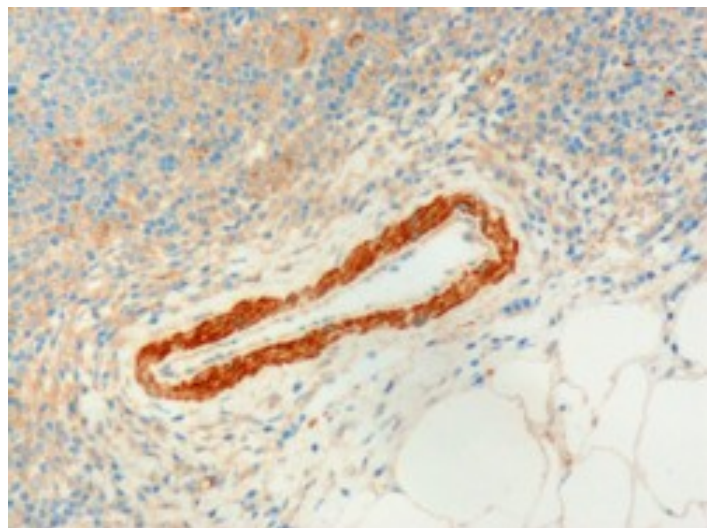


GOAT ANTI-USP20 / VDU2 ANTIBODY

SKU: EB05997



SPECIFICATIONS

Formulation Supplied at 0.5 mg/ml in Tris saline, 0.02% sodium azide, pH7.3 with 0.5% bovine serum albumin.

Unit Size 100 µg

Storage Instructions Aliquot and store at -20°C. Minimize freezing and thawing.

Synonym / Alias Names USP20|VDU2|ubiquitin specific protease 20|KIAA1003|pVHL-interacting deubiquitinating enzyme 2|ubiquitin specific peptidase 20|LSFR3A

Accession ID NP_006667.3

Blocking Peptide EBP05997

Immunogen Peptide with sequence C-HGEQKIEAETRAV, from the C Terminus of the protein sequence according to NP_006667.3.

Product Comments Reported variants represent identical protein (NP_006667.3; NP_001103773.2; NP_001008563.2).

Peptide Sequence C-HGEQKIEAETRAV

Purification Method Purified from goat serum by ammonium sulphate precipitation followed by antigen affinity chromatography using the immunizing peptide.

Shipping Instructions	Refrigerated
Predicted Species	Human, Mouse, Rat, Dog, Pig, Cow
Reactive Species	Human
Human Gene ID	10868
Mouse Gene ID	74270
Product Grade	https://prod-vector-labs-pimcore-assets.s3.us-east-1.amazonaws.com/assets/products/image/elite_medium.png
IHC Results	In paraffin embedded Human Lymph Node shows strongest staining in smooth muscle cells surrounding a vessel. Data obtained from a previous batch (different goat). Recommended concentration, 3 µg/ml.
ELISA	
Detection Limit	Antibody detection limit dilution 1:4000.
Western Blot	Approx 100kDa band observed in Human Tonsil lysates (calculated MW of 102kDa according to NP_006667.3). Recommended concentration: 1-3µg/ml.
Application Type	Pep-ELISA, WB, IHC

DOCUMENTS

- [Data Sheet](#)

GALLERY IMAGES

