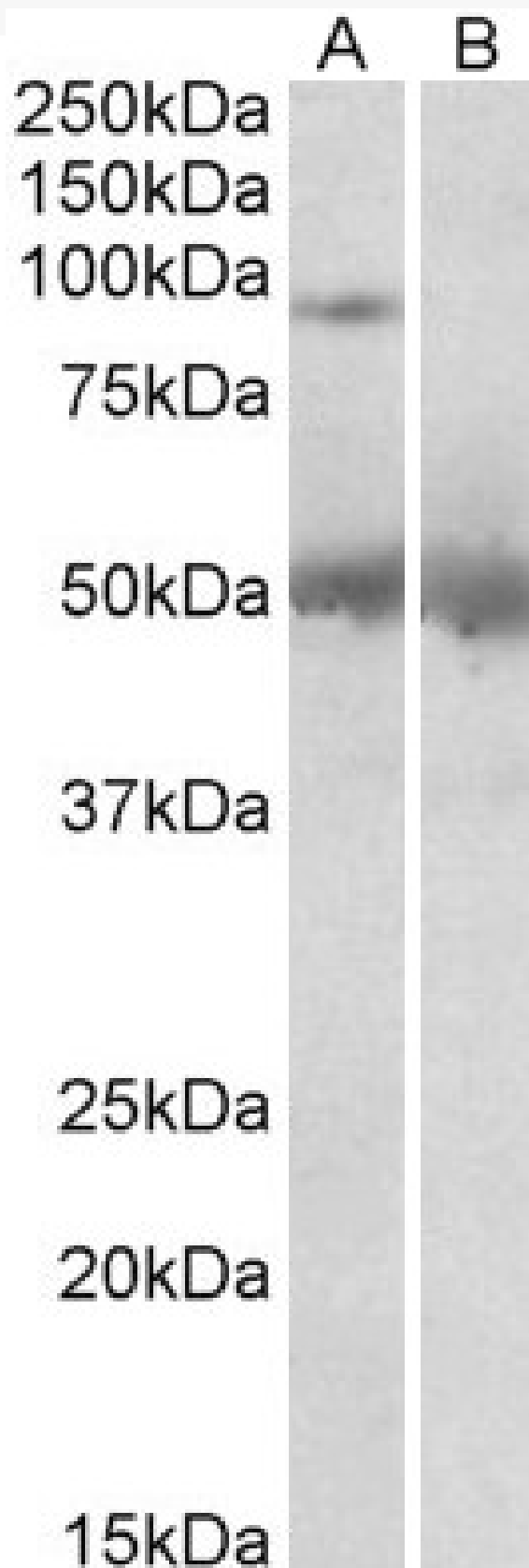


GOAT ANTI-USP6 / TRE2 / TRE17 ANTIBODY

SKU: EB05974



SPECIFICATIONS

Formulation	Supplied at 0.5 mg/ml in Tris saline, 0.02% sodium azide, pH7.3 with 0.5% bovine serum albumin.
Unit Size	100 µg
Storage Instructions	Aliquot and store at -20°C. Minimize freezing and thawing.
Synonym / Alias Names	ubiquitin-specific protease USP6 ubiquitin specific peptidase 6 (Tre-2 oncogene) ubiquitin specific protease 6 ubiquitin specific peptidase 6-[USP6-short] hyperpolymorphic gene 1 tre-2 oncogene Tre-2 TRE17 Tre2 TRE2 HRP1 ubiquitin specific protease 6 (Tre-2 oncogene) USP6
Accession ID	NP_004496.1
Blocking Peptide	EBP05974
Immunogen	Peptide with sequence KISPLHHLQMECSP, from the C Terminus of the protein sequence according to NP_004496.1.
Peptide Sequence	KISPLHHLQMECSP
Purification Method	Purified from goat serum by ammonium sulphate precipitation followed by antigen affinity chromatography using the immunizing peptide.
Shipping Instructions	Refrigerated
Predicted Species	Human
Reactive Species	Human
Human Gene ID	9098
Product Grade	https://prod-vector-labs-pimcore-assets.s3.us-east-1.amazonaws.com/assets/products/image/elite_medium.png
ELISA Detection Limit	Antibody detection limit dilution 1:16000.
Western Blot	Approx 90kDa band observed in Human Placenta lysates (calculated MW of 89.5kDa according to NP_004496.1). Recommended concentration: 1-3µg/ml. An additional band of 50kDa was consistently observed, however this band was not blocked by the immunizing peptide and it is therefore a non-specific signal. We call for caution when used for other assays than Western blot.
Application Type	Pep-ELISA, WB

DOCUMENTS

- [Data Sheet](#)

GALLERY IMAGES

