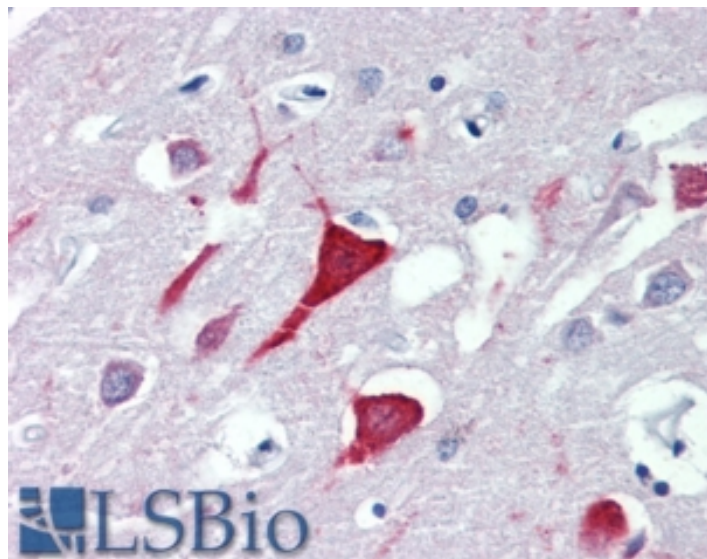


GOAT ANTI-USP9X ANTIBODY

SKU: EB08669



SPECIFICATIONS

Formulation Supplied at 0.5 mg/ml in Tris saline, 0.02% sodium azide, pH7.3 with 0.5% bovine serum albumin.

Unit Size 100 µg

Storage Instructions Aliquot and store at -20°C. Minimize freezing and thawing.

Synonym / Alias Names ubiquitin-specific processing protease FAF-X|ubiquitin thiolesterase FAF-X|ubiquitin specific protease 9, X-linked (fat facets-like, Drosophila)|ubiquitin specific protease 9, X-linked|ubiquitin specific protease 9, X chromosome (fat facets-like Drosophila)|ubiquitin specific peptidase 9, X-linked (fat facets-like, Drosophila)|fat facets protein related, X-linked|deubiquitinating enzyme FAF-X|Drosophila fat facets related, X-linked|FAF|DFFRX|ubiquitin specific peptidase 9, X-linked|USP9X

Accession ID NP_001034679.2

Blocking Peptide EBP08669

Immunogen Peptide with sequence C-KKATSVQQIEMEES, from the C Terminus (near) of the protein sequence according to NP_001034679.2.

Product Comments This antibody is expected to recognize isoform 3 (NP_001034679.2)

Peptide Sequence C-KKATSVQQIEMEES

Purification Method	Purified from goat serum by ammonium sulphate precipitation followed by antigen affinity chromatography using the immunizing peptide.
Shipping Instructions	Refrigerated
Predicted Species	Human
Reactive Species	Human
Human Gene ID	8239
Product Grade	https://prod-vector-labs-pimcore-assets.s3.us-east-1.amazonaws.com/assets/products/image/elite_medium.png
IHC Results	Immunohistochemistry: In paraffin embedded Human Cortex shows strong cellular body staining of neurons. Recommended concentration, 3-5µg/ml.
ELISA Detection Limit	Antibody detection limit dilution 1:16000.
Application Type	Pep-ELISA, IHC

DOCUMENTS

- [Data Sheet](#)

GALLERY IMAGES

