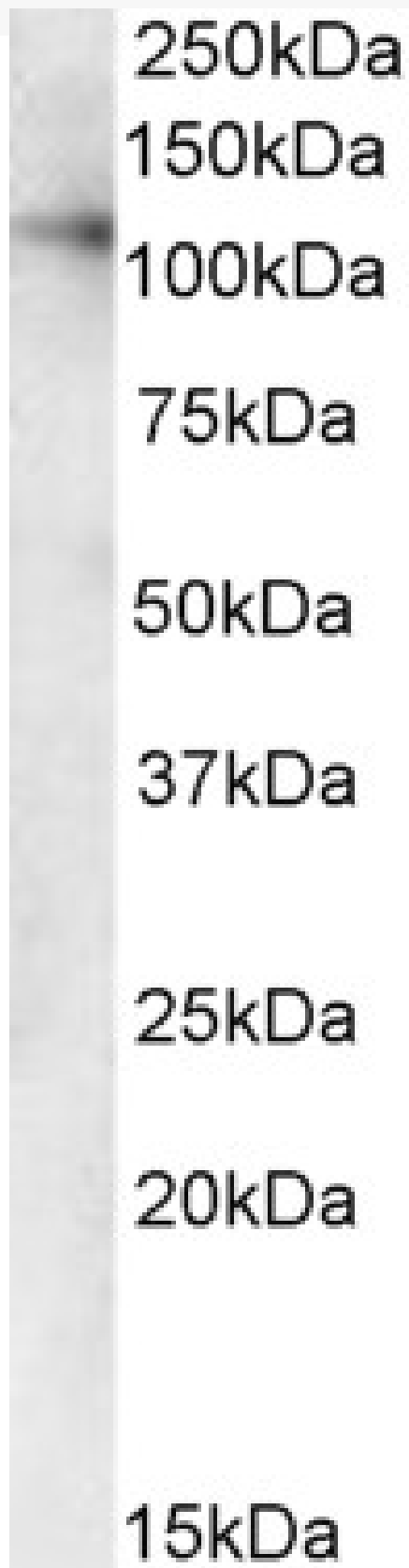


GOAT ANTI-VDP P115 ANTIBODY

SKU: EB06982



SPECIFICATIONS

Formulation	Supplied at 0.5 mg/ml in Tris saline, 0.02% sodium azide, pH7.3 with 0.5% bovine serum albumin.
Unit Size	100 µg
Storage Instructions	Aliquot and store at -20°C. Minimize freezing and thawing.
Synonym / Alias Names	vesicle docking protein p115 transcytosis associated protein USO1 homolog, vesicle docking protein USO1 homolog, vesicle docking protein (yeast) USO1 transcytosis-associated protein TAP P115 vesicle docking protein VDP p115
Accession ID	NP_003706.1
Blocking Peptide	EBP06982
Immunogen	Peptide with sequence C-DESEDPGKDLDH, from the C Terminus of the protein sequence according to NP_003706.1.
Peptide Sequence	C-DESEDPGKDLDH
Purification Method	Purified from goat serum by ammonium sulphate precipitation followed by antigen affinity chromatography using the immunizing peptide.
Shipping Instructions	Refrigerated
Predicted Species	Human
Reactive Species	Human
Human Gene ID	8615
Product Grade	https://prod-vector-labs-pimcore-assets.s3.us-east-1.amazonaws.com/assets/products/image/elite_medium.png
ELISA	
Detection Limit	Antibody detection limit dilution 1:2000.
Western Blot	Approx 110kDa band observed in Human Kidney and Liver lysates (calculated MW of 108kDa according to NP_003706.1). Recommended concentration: 1-3µg/ml. Primary incubation was 1 hour.
Application Type	Pep-ELISA, WB

DOCUMENTS

- [Data Sheet](#)

GALLERY IMAGES

