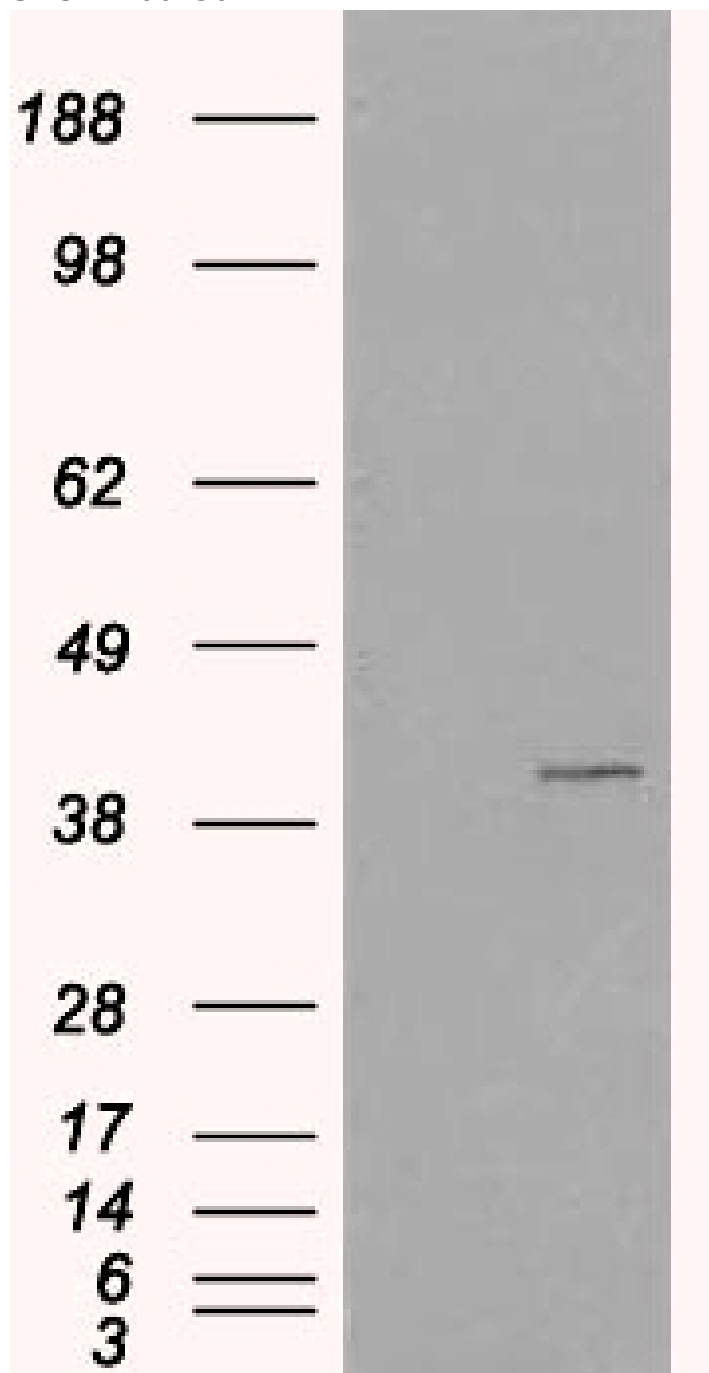


GOAT ANTI-VPS26A ANTIBODY

SKU: EB06256



SPECIFICATIONS

Formulation	Supplied at 0.5 mg/ml in Tris saline, 0.02% sodium azide, pH7.3 with 0.5% bovine serum albumin.
Unit Size	100 µg
Storage	Aliquot and store at -20°C. Minimize freezing and thawing.
Instructions	
Synonym / Alias Names	vacuolar protein sorting 26 A OTTHUMP00000019721 PEP8A vacuolar protein sorting 26 homolog A (S. pombe) vacuolar protein sorting 26 homolog A vacuolar protein sorting 26 (yeast) vacuolar protein sorting 26 (yeast homolog) Hbeta58 homolog VPS26 Hbeta58 HB58 FLJ12930 vacuolar protein sorting 26 homologue A (yeast) VPS26A
Accession ID	NP_004887.2
Blocking Peptide	EBP06256
Immunogen	Peptide with sequence C-SPESQASAEQPEM, from the C Terminus of the protein sequence according to NP_004887.2.
Product Comments	This antibody is expected to recognize isoform 1 (NP_004887.2) only.
Peptide Sequence	C-SPESQASAEQPEM
Purification Method	Purified from goat serum by ammonium sulphate precipitation followed by antigen affinity chromatography using the immunizing peptide.
Shipping Instructions	Refrigerated
Predicted Species	Human, Mouse, Rat, Pig, Cow
Reactive Species	Human
Human Gene ID	9559
Mouse Gene ID	30930
Product Grade	https://prod-vector-labs-pimcore-assets.s3.us-east-1.amazonaws.com/assets/products/image/elite_medium.png
ELISA Detection Limit	Antibody detection limit dilution 1:4000.
Western Blot	Approx 40kDa band observed in Human Kidney lysates (calculated MW of 38.2 kDa according to NP_004887.2). In transfected HEK293 transiently expressing VPS26A a band of approx. 40kDa is observed. This band is not observed in the non-transfected HEK293. Recommended for use at 1-3µg/ml.
Application Type	Pep-ELISA, WB

DOCUMENTS

- [Data Sheet](#)

GALLERY IMAGES

