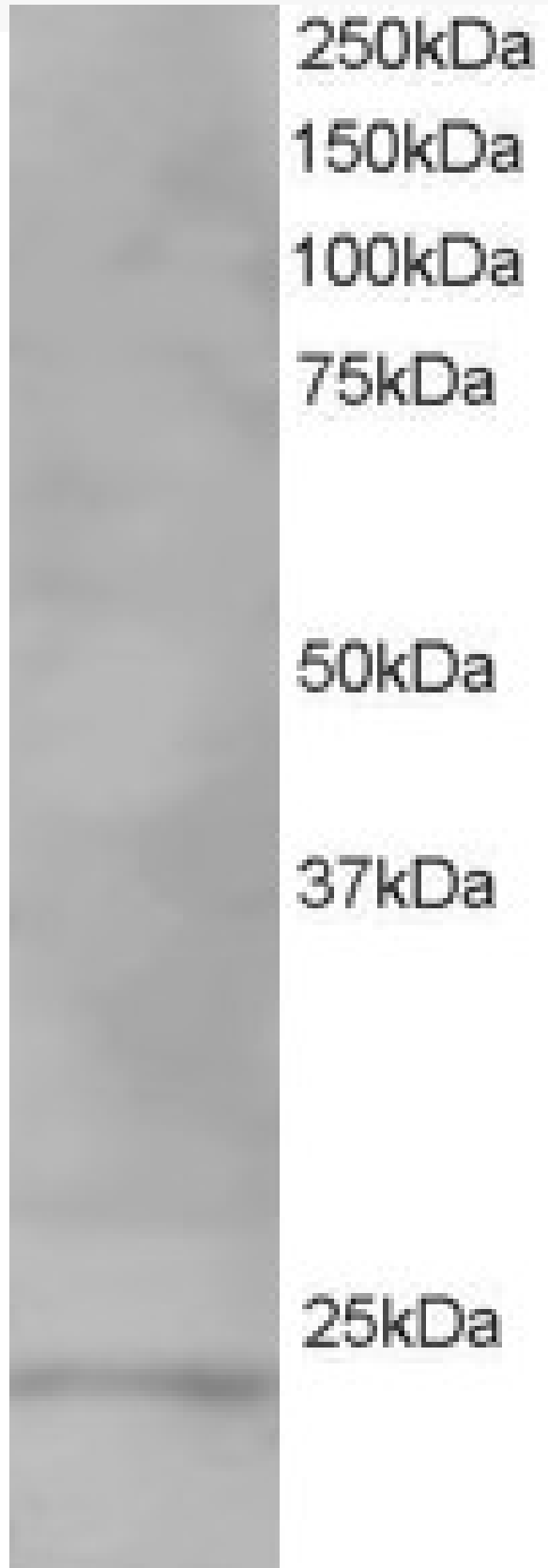


GOAT ANTI-VPS28 ANTIBODY

SKU: EB06276



SPECIFICATIONS

Formulation Supplied at 0.5 mg/ml in Tris saline, 0.02% sodium azide, pH7.3 with 0.5% bovine serum albumin.

Unit Size 100 µg

Storage Instructions Aliquot and store at -20°C. Minimize freezing and thawing.

Synonym / Alias Names yeast class E protein Vps28p homolog|vacuolar protein sorting 28|MGC60323|vacuolar protein sorting 28 homolog (S. cerevisiae)|vacuolar protein sorting 28 (yeast)|VPS28

Accession ID NP_057292.1

Blocking Peptide EBP06276

Immunogen Peptide with sequence C-ESAYNAFNRFLHA, from the C Terminus of the protein sequence according to NP_057292.1.

Product Comments This antibody is expected to recognize isoform 1 (NP_057292.1) only.

Peptide Sequence C-ESAYNAFNRFLHA

Purification Method Purified from goat serum by ammonium sulphate precipitation followed by antigen affinity chromatography using the immunizing peptide.

Shipping Instructions Refrigerated

Predicted Species Human, Mouse, Rat, Dog, Pig

Reactive Species Human

Human Gene ID 51160

Mouse Gene ID 66914

Product Grade https://prod-vector-labs-pimcore-assets.s3.us-east-1.amazonaws.com/assets/products/image/elite_medium.png

IHC Results In paraffin embedded Human Testis, stains acrosomal head caps in round spermatids. Recommended concentration: 10µg/ml.

ELISA Detection Limit Antibody detection limit dilution 1:1000.

Western Blot Approx 24kDa band observed in H460, Human Testis and Brain lysates (predicted MW of 25kDa according to NP_057292.1). Recommended for use at 1-3µg/ml.

Application Type Pep-ELISA, WB, IHC

DOCUMENTS

- [Data Sheet](#)

GALLERY IMAGES



250kDa

150kDa

100kDa

75kDa

50kDa

37kDa

25kDa

