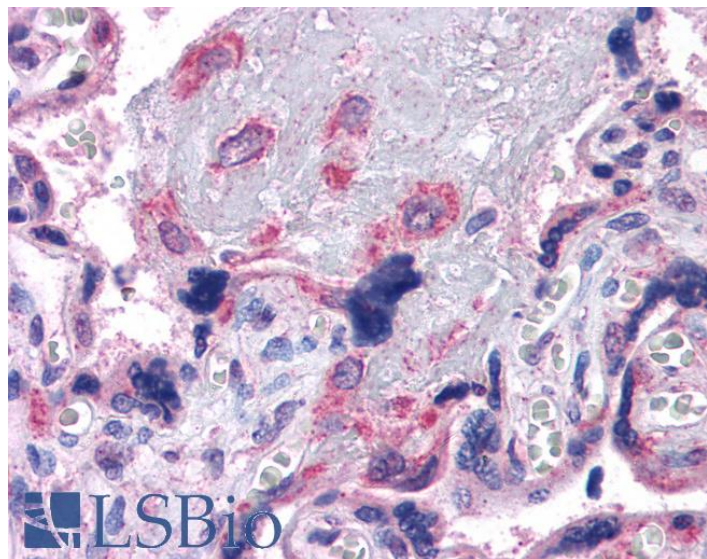


GOAT ANTI-VPS29 (INTERNAL) ANTIBODY

SKU: EB07369



SPECIFICATIONS

Formulation Supplied at 0.5 mg/ml in Tris saline, 0.02% sodium azide, pH7.3 with 0.5% bovine serum albumin.

Unit Size 100 µg

Storage Instructions Aliquot and store at -20°C. Minimize freezing and thawing.

Synonym / Alias Names x 007 protein|vacuolar sorting protein VPS29/PEP11|vacuolar protein sorting 29 (yeast homolog)|vacuolar protein sorting 29|retromer protein|PEP11|FLJ20492|DKFZp564F0223|DC7|DC15|vacuolar protein sorting 29 (yeast)|VPS29

Accession ID NP_057310.1; NP_476528.1

Blocking Peptide EBP07369

Immunogen Peptide with sequence CTGNLCTKESYDYLK, from the internal region of the protein sequence according to NP_057310.1; NP_476528.1.

Product Comments This antibody is expected to recognise both reported isoforms (NP_057310.1 and NP_476528.1).

Peptide Sequence CTGNLCTKESYDYLK

Purification Method Purified from goat serum by ammonium sulphate precipitation followed by antigen affinity chromatography using the immunizing peptide.

Shipping Instructions	Refrigerated
Predicted Species	Human, Mouse, Rat, Dog
Reactive Species	Human
Human Gene ID	51699
Mouse Gene ID	56433
Rat Gene ID	288666
Product Grade	https://prod-vector-labs-pimcore-assets.s3.us-east-1.amazonaws.com/assets/products/image/elite_medium.png
IHC Results	Paraffin embedded Human Uterus and Placenta. Recommended concentration: 3.75µg/ml.
ELISA	
Detection Limit	Antibody detection limit dilution 1:16000.
Western Blot	Preliminary experiments gave an approx 60kDa band in Human Spleen lysates after 0.3µg/ml antibody staining. Please note that currently we cannot find an explanation in the literature for the band we observe given the calculated size of 20.5kDa according to NP_057310.1 and 20.9kDa according to NP_476528.1. The 60kDa band was successfully blocked by incubation with the immunizing peptide.
Application Type	Pep-ELISA, IHC

DOCUMENTS

- [Data Sheet](#)

GALLERY IMAGES

