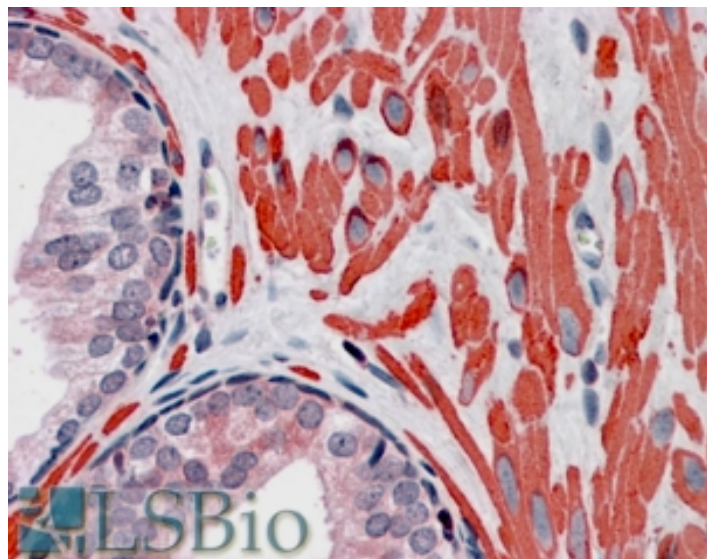


GOAT ANTI-VPS37C ANTIBODY

SKU: EB06833



SPECIFICATIONS

Formulation Supplied at 0.5 mg/ml in Tris saline, 0.02% sodium azide, pH7.3 with 0.5% bovine serum albumin.

Unit Size 100 µg

Storage Instructions Aliquot and store at -20°C. Minimize freezing and thawing.

Synonym / Alias Names vacuolar protein sorting 37 homolog C (S. cerevisiae)|vacuolar protein sorting 37C|FLJ20847|vacuolar protein sorting 37C (yeast)|VPS37C

Accession ID NP_060436.4

Blocking Peptide EBP06833

Immunogen Peptide with sequence C-ETLKDKTLQEELQ, from the internal region of the protein sequence according to NP_060436.4.

Peptide Sequence C-ETLKDKTLQEELQ

Purification Method Purified from goat serum by ammonium sulphate precipitation followed by antigen affinity chromatography using the immunizing peptide.

Shipping Instructions Refrigerated

Predicted Species	Human
Reactive Species	Human
Human Gene ID	55048
Product Grade	https://prod-vector-labs-pimcore-assets.s3.us-east-1.amazonaws.com/assets/products/image/elite_medium.png
IHC Results	Paraffin embedded Human Prostate and Breast. Recommended concentration: 3.75µg/ml.
ELISA	
Detection Limit	Antibody detection limit dilution 1:32000.
Western Blot	Approx 38kDa band observed in human duodenum lysates (calculated MW of 38.7kDa according to NP_060436.4). Recommended concentration: 0.03 - 0.1µg/ml.
Application Type	Pep-ELISA, WB, IHC

DOCUMENTS

- [Data Sheet](#)

GALLERY IMAGES

