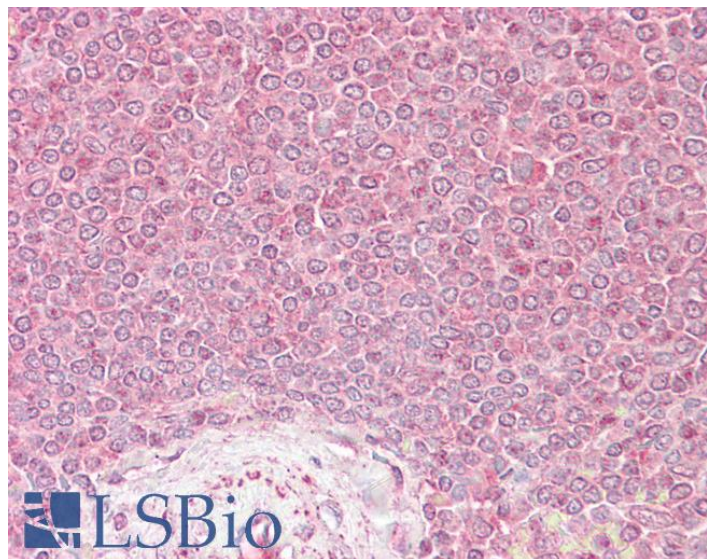


GOAT ANTI-VPS45 (INTERNAL) ANTIBODY

SKU: EB06832



SPECIFICATIONS

Formulation	Supplied at 0.5 mg/ml in Tris saline, 0.02% sodium azide, pH7.3 with 0.5% bovine serum albumin.
Unit Size	100 µg
Storage	Aliquot and store at -20°C. Minimize freezing and thawing.
Instructions	
Synonym / Alias	RP11-458I7.2 vacuolar protein sorting 45 homolog (S. cerevisiae) vacuolar protein sorting 45B (yeast) vacuolar protein sorting 45A (yeast homolog) vacuolar protein sorting 45A leucocyte vacuolar protein sorting
Names	45 VSP45A VSP45 VPS54A VPS45B VPS45 H1VPS45 H1 HGNC:14579 VPS45A
Accession ID	NP_009190.2
Blocking Peptide	EBP06832
Immunogen	Peptide with sequence C-FQKKKPKEQQKLES, from the internal region of the protein sequence according to NP_009190.2.
Peptide Sequence	C-FQKKKPKEQQKLES
Purification Method	Purified from goat serum by ammonium sulphate precipitation followed by antigen affinity chromatography using the immunizing peptide.
Shipping Instructions	Refrigerated

Predicted Species	Human, Mouse, Rat, Dog, Pig, Cow
Reactive Species	Human
Human Gene ID	11311
Product Grade	https://prod-vector-labs-pimcore-assets.s3.us-east-1.amazonaws.com/assets/products/image/elite_medium.png
IHC Results	Paraffin embedded Human Spleen. Recommended concentration: 2.5µg/ml.
ELISA	
Detection Limit	Antibody detection limit dilution 1:32000.
Western Blot	Approx 55kDa band observed in Human Placenta lysates (calculated MW of 65.1kDa according to NP_009190.2). Recommended concentration: 0.03-0.1 µg/ml.
Application Type	Pep-ELISA, WB, IHC

DOCUMENTS

- [Data Sheet](#)

GALLERY IMAGES

