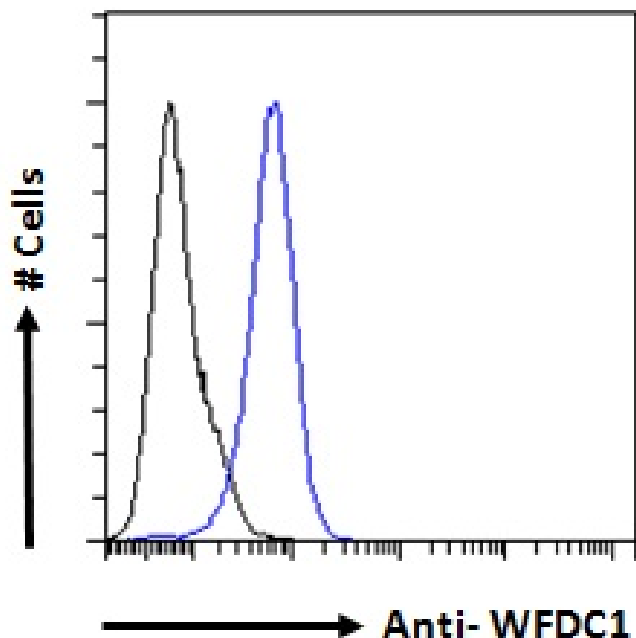


GOAT ANTI-WFDC1 / PS20 ANTIBODY

SKU: EB07577



SPECIFICATIONS

Unit Size	100 µg
Synonym / Alias Names	prostate stromal protein ps20 WAP four-disulfide core domain 1 homolog (mouse) PS20 WAP four-disulfide core domain 1 WFDC1
Usage Summary	Flow Cytometry: Flow cytometric analysis of A431 cells. Recommended concentration: 10ug/ml.
Accession ID	NP_067020.2; NP_001269396.1
Blocking Peptide	EBP07577
Immunogen	Peptide with sequence C-KNVAEPGRGQQKHFQ, from the C Terminus of the protein sequence according to NP_067020.2; NP_001269396.1.
Peptide Sequence	C-KNVAEPGRGQQKHFQ
Shipping Instructions	Refrigerated

Predicted Species	Human, Mouse
Reactive Species	Human
Human Gene ID	58189
Product Grade	https://prod-vector-labs-pimcore-assets.s3.us-east-1.amazonaws.com/assets/products/image/elite_medium.png
ELISA	
Detection Limit	Antibody detection limit dilution 1:32000.
Application Type	Pep-ELISA, FC

DOCUMENTS

- [Data Sheet](#)

GALLERY IMAGES

