

# GOAT ANTI-WFDC2 (AA29-43) ANTIBODY

**SKU:** EB09963

250kDa

150kDa

100kDa

75kDa

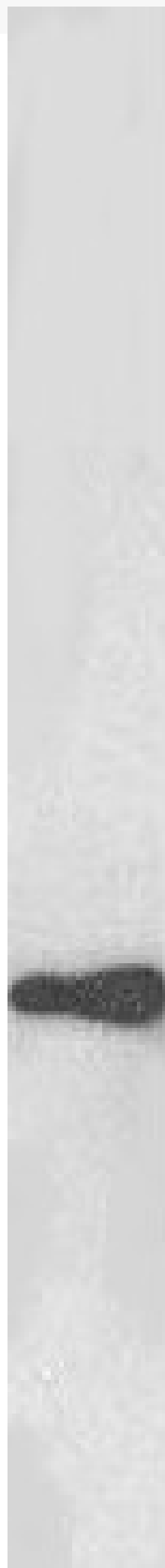
50kDa

37kDa

25kDa

20kDa

15kDa



## SPECIFICATIONS

<b>Formulation</b>	Supplied at 0.5 mg/ml in Tris saline, 0.02% sodium azide, pH7.3 with 0.5% bovine serum albumin.
<b>Unit Size</b>	100 µg
<b>Storage Instructions</b>	Aliquot and store at -20°C. Minimize freezing and thawing.
<b>Synonym / Alias Names</b>	WFDC2 WAP5 WAP four-disulfide core domain 2 WAP domain containing protein HE4-V4 MGC57529 major epididymis-specific, whey-acidic protein type, four-disulfide core epididymal secretory protein E4 epididymal protein 4 EDDM4 dj461P17.6
<b>Accession ID</b>	NP_006094.3
<b>Blocking Peptide</b>	EBP09963
<b>Immunogen</b>	Peptide with sequence GAEKTVCPQLQADQ, from the internal region of the protein sequence according to NP_006094.3.
<b>Peptide Sequence</b>	GAEKTVCPQLQADQ
<b>Purification Method</b>	Purified from goat serum by ammonium sulphate precipitation followed by antigen affinity chromatography using the immunizing peptide.
<b>Shipping Instructions</b>	Refrigerated
<b>Predicted Species</b>	Human, Dog
<b>Reactive Species</b>	Human
<b>Human Gene ID</b>	10406
<b>Product Grade</b>	<a href="https://prod-vector-labs-pimcore-assets.s3.us-east-1.amazonaws.com/assets/products/image/elite_medium.png">https://prod-vector-labs-pimcore-assets.s3.us-east-1.amazonaws.com/assets/products/image/elite_medium.png</a>
<b>ELISA</b>	
<b>Detection Limit</b>	Antibody detection limit dilution 1:1000.
<b>Western Blot</b>	Approx 25kDa band observed in Human Testis lysates (calculated MW of 13kDa according to NP_006094.3). The observed molecular weight corresponds to earlier findings with different antibodies from other commercial sources. Recommended concentration: 0.01-0.1µg/ml. Primary incubation was 1 hour.
<b>Application Type</b>	Pep-ELISA, WB

## DOCUMENTS

- [Data Sheet](#)

## GALLERY IMAGES

