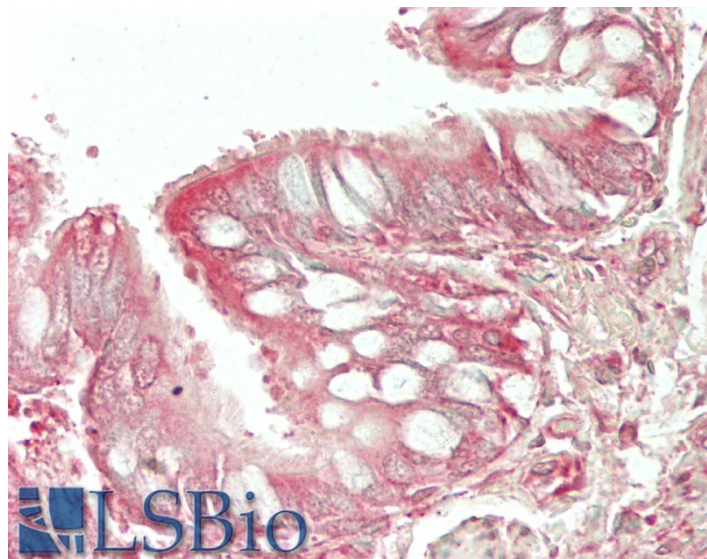


GOAT ANTI-WFDC2 (MOUSE) ANTIBODY

SKU: EB11670



SPECIFICATIONS

Formulation Supplied at 0.5 mg/ml in Tris saline, 0.02% sodium azide, pH7.3 with 0.5% bovine serum albumin.

Unit Size 100 µg

Storage Instructions Aliquot and store at -20°C. Minimize freezing and thawing.

Synonym / Alias Names Wfdc2|WAP5|WAP four-disulfide core domain protein 2|WAP four-disulfide core domain 2|WAP domain-containing protein HE4|OTTMUSP00000001047|HE4|1600023A02Rik

Accession ID NP_080599.1

Blocking Peptide EBP11670

Immunogen Peptide with sequence DAEKPGECQLEPITD, from the N Terminus of the protein sequence according to NP_080599.1.

Product Comments The immunizing peptide represents the N terminus of the mature protein.

Peptide Sequence DAEKPGECQLEPITD

Purification Method Purified from goat serum by ammonium sulphate precipitation followed by antigen affinity chromatography using the immunizing peptide.

Shipping Instructions	Refrigerated
Predicted Species	Mouse
Reactive Species	Human
Mouse Gene ID	67701
Product Grade	https://prod-vector-labs-pimcore-assets.s3.us-east-1.amazonaws.com/assets/products/image/elite_medium.png
IHC Results	Paraffin embedded Human Lung. Recommended concentration: 5µg/ml.
ELISA	
Detection Limit	Antibody detection limit dilution 1:128000.
Western Blot	Preliminary experiments in lysates of all mouse tissues tested gave no specific signal but low background (at antibody concentration up to 1µg/ml).
Application Type	Pep-ELISA, IHC

DOCUMENTS

- [Data Sheet](#)

GALLERY IMAGES

