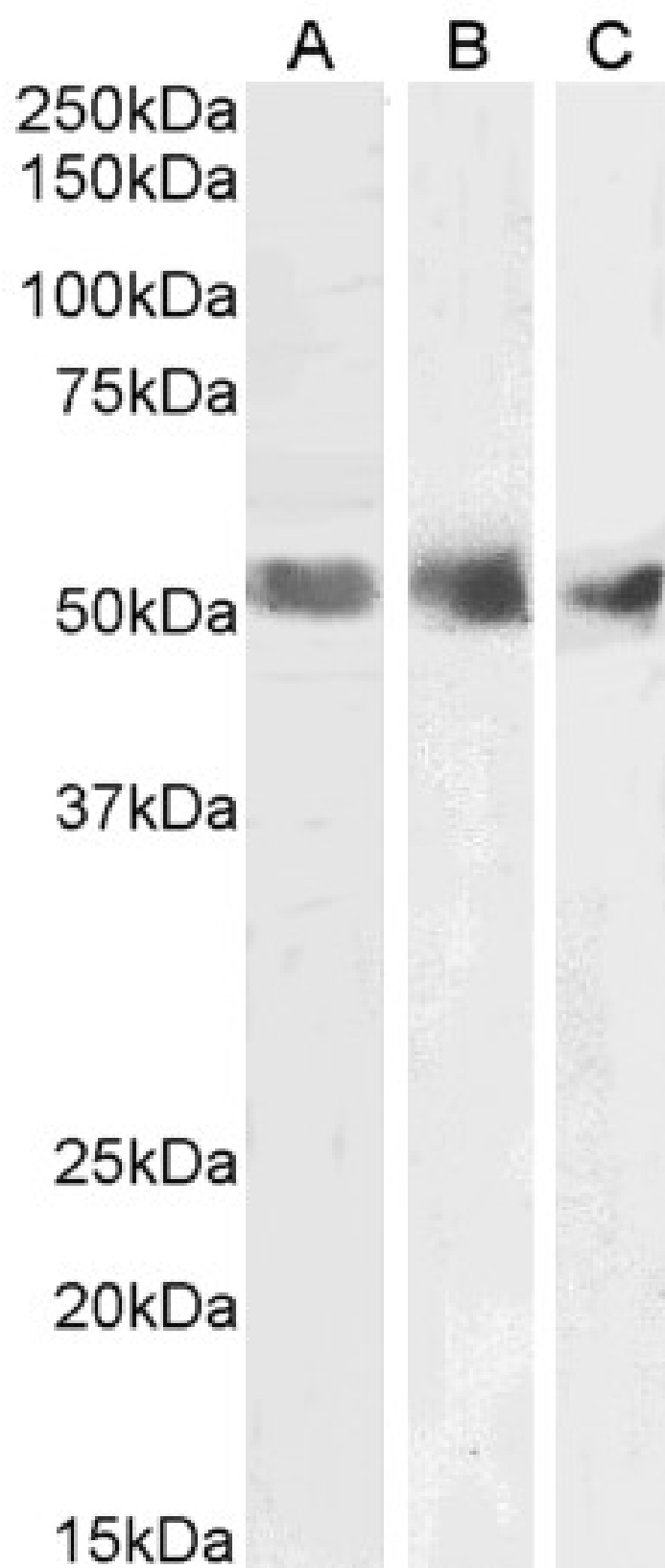


GOAT ANTI-WILMS TUMOR 1 / WT1 ANTIBODY

SKU: EB07332



SPECIFICATIONS

Formulation	Supplied at 0.5 mg/ml in Tris saline, 0.02% sodium azide, pH7.3 with 0.5% bovine serum albumin.
Unit Size	100 µg
Storage Instructions	Aliquot and store at -20°C. Minimize freezing and thawing.
Synonym / Alias Names	WT33 WIT-2 WAGR GUD Wilms tumor 1 WT1
Accession ID	NP_000369.3; NP_077742.2; NP_077743.2; NP_077744.3
Blocking Peptide	EBP07332
Immunogen	Peptide with sequence QDPASTCVPEPASQH, from the N Terminus of the protein sequence according to NP_000369.3; NP_077742.2; NP_077743.2; NP_077744.3.
Product Comments	This antibody is expected to recognise all four reported isoforms (NP_000369.3, NP_077742.2, NP_077743.2, NP_077744.3).
Peptide Sequence	QDPASTCVPEPASQH
Purification Method	Purified from goat serum by ammonium sulphate precipitation followed by antigen affinity chromatography using the immunizing peptide.
Shipping Instructions	Refrigerated
Predicted Species	Human
Reactive Species	Human
Human Gene ID	7490
Product Grade	https://prod-vector-labs-pimcore-assets.s3.us-east-1.amazonaws.com/assets/products/image/elite_medium.png
ELISA Detection Limit	Antibody detection limit dilution 1:32000.
Western Blot	Approx 55kDa band observed in Human Kidney, Spleen and Testis lysates (calculated MW of 54.3kDa according to NP_000369.3). Recommended concentration: 1-3µg/ml.
Application Type	Pep-ELISA, WB

DOCUMENTS

- [Data Sheet](#)

GALLERY IMAGES

