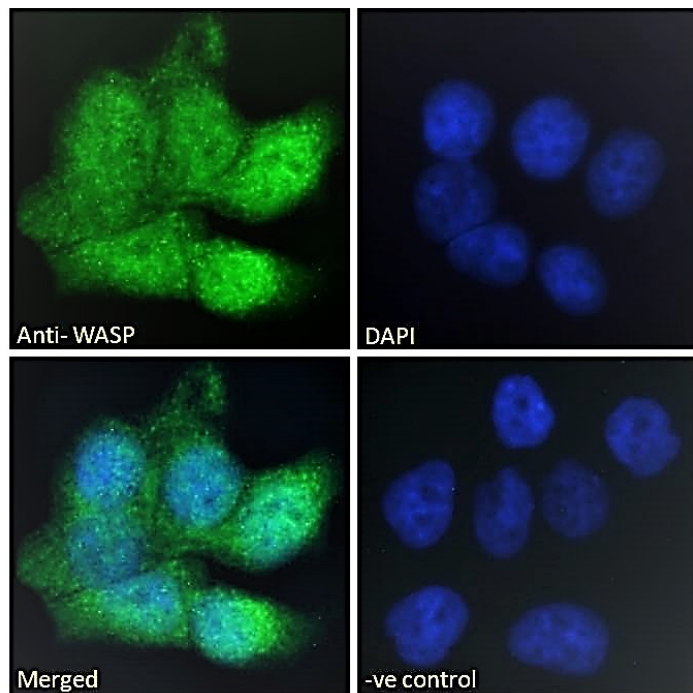


GOAT ANTI-WISKOTT-ALDRICH SYNDROME / WASP ANTIBODY

SKU: EB06675



SPECIFICATIONS

Formulation	Supplied at 0.5 mg/ml in Tris saline, 0.02% sodium azide, pH7.3 with 0.5% bovine serum albumin.
Unit Size	100 µg
Storage Instructions	Aliquot and store at -20°C. Minimize freezing and thawing.
Synonym / Alias Names	Wiskott-Aldrich syndrome protein THC1 Wiskott-Aldrich syndrome (eczema-thrombocytopenia) protein thrombocytopenia 1 (X-linked) IMD2 THC WAS Wiskott-Aldrich syndrome (eczema-thrombocytopenia) WASP
Usage Summary	Immunofluorescence: Strong expression of the protein seen in the nuclei and cytoplasm of HepG2 and U2OS cells. Recommended concentration: 10µg/ml. Flow Cytometry: Flow cytometric analysis of HepG2 cells. Recommended concentration: 10ug/ml.
Accession ID	NP_000368.1
Blocking Peptide	EBP06675

Immunogen	Peptide with sequence C-SPADKKRSGKKKI, from the internal region of the protein sequence according to NP_000368.1.
Product Comments	No cross-reactivity expected with N WASP (WASL).
Peptide Sequence	C-SPADKKRSGKKKI
Purification Method	Purified from goat serum by ammonium sulphate precipitation followed by antigen affinity chromatography using the immunizing peptide.
Shipping Instructions	Refrigerated
Predicted Species	Human, Mouse, Rat, Dog
Reactive Species	Human
Human Gene ID	7454
Product Grade	https://prod-vector-labs-pimcore-assets.s3.us-east-1.amazonaws.com/assets/products/image/elite_plus_medium.png
IHC Results	Paraffin embedded Human Spleen. Recommended concentration: 5µg/ml.
ELISA	
Detection Limit	Antibody detection limit dilution 1:128000.
Application Type	Pep-ELISA, IHC, IF, FC

DOCUMENTS

- [Data Sheet](#)

GALLERY IMAGES

