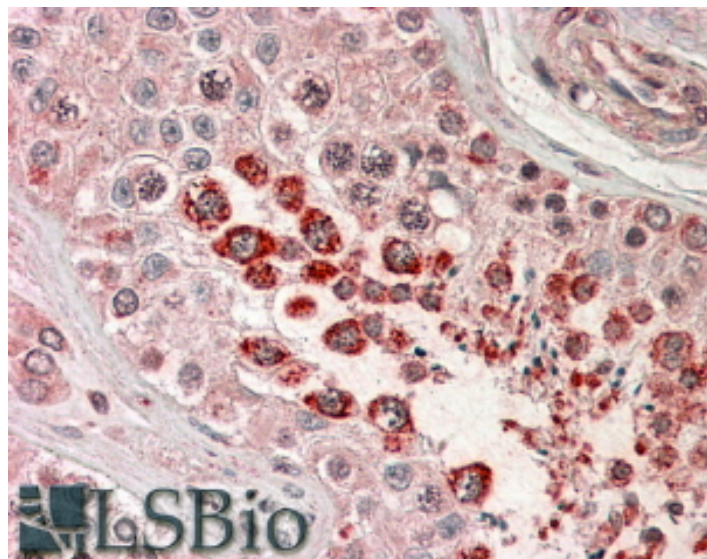


GOAT ANTI-XAGE1 (ISOFORM 1D) / GAGED2 ANTIBODY

SKU: EB06434



SPECIFICATIONS

Formulation Supplied at 0.5 mg/ml in Tris saline, 0.02% sodium azide, pH7.3 with 0.5% bovine serum albumin.

Unit Size 100 µg

Storage Instructions Aliquot and store at -20°C. Minimize freezing and thawing.

Synonym /

Alias XAGE-1 protein|G antigen, family D, 2|XAGE-1|XAGE1|GAGED2

Names

Accession ID NP_597673.1

Blocking Peptide EBP06434

Immunogen Peptide with sequence CGFGFRRQGEDNT, from the C Terminus of the protein sequence according to NP_597673.1.

Product Comments This antibody is expected to recognise isoform d (NP_597673.1) only. Reported variants represent identical protein (NP_597673.1; NP_001091067.1; NP_001091074.1; NP_001091062.1; NP_001091065.1).

Peptide Sequence CGFGFRRQGEDNT

Purification Method Purified from goat serum by ammonium sulphate precipitation followed by antigen affinity chromatography using the immunizing peptide.

Shipping Instructions	Refrigerated
Predicted Species	Human
Reactive Species	Human
Human Gene ID	9503
Product Grade	https://prod-vector-labs-pimcore-assets.s3.us-east-1.amazonaws.com/assets/products/image/elite_medium.png
IHC Results	In paraffin embedded Human testis shows polar cytoplasm staining in primary spermatocytes. Recommended concentration, 3-6µg/ml.
ELISA	
Detection Limit	Antibody detection limit dilution 1:8000.
Application Type	Pep-ELISA, IHC

DOCUMENTS

- [Data Sheet](#)

GALLERY IMAGES

