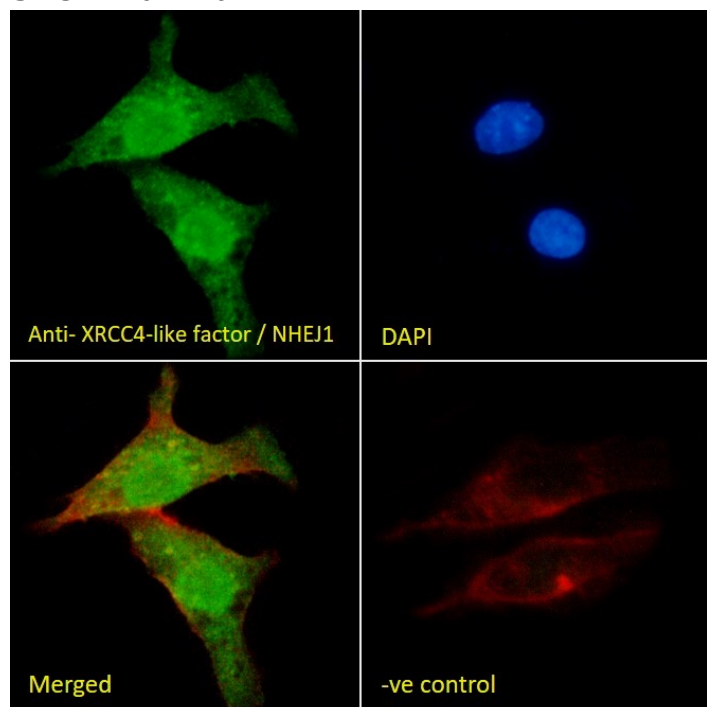


GOAT ANTI-XRCC4-LIKE FACTOR / NHEJ1 ANTIBODY

SKU: EB07440



SPECIFICATIONS

Formulation	Supplied at 0.5 mg/ml in Tris saline, 0.02% sodium azide, pH7.3 with 0.5% bovine serum albumin.
Unit Size	100 µg
Storage Instructions	Aliquot and store at -20°C. Minimize freezing and thawing.
Synonym / Alias Names	Cernunnos XLF FLJ12610 nonhomologous end-joining factor 1 XRCC4-like factor NHEJ1
Usage Summary	<p>Immunofluorescence: Strong expression of the protein seen in HepG2 and U2OS cells.</p> <p>Flow Cytometry: Flow cytometric analysis of HepG2 cells. Recommended concentration: 10ug/ml.</p>
Accession ID	NP_079058.1; NP_001364428.1
Blocking Peptide	EBP07440

Immunogen	Peptide with sequence C-QRPQLSKVKRKKPR, from the C Terminus of the protein sequence according to NP_079058.1; NP_001364428.1.
Peptide Sequence	C-QRPQLSKVKRKKPR
Purification Method	Purified from goat serum by ammonium sulphate precipitation followed by antigen affinity chromatography using the immunizing peptide.
Shipping Instructions	Refrigerated
Predicted Species	Human
Reactive Species	Human
Human Gene ID	79840
Product Grade	https://prod-vector-labs-pimcore-assets.s3.us-east-1.amazonaws.com/assets/products/image/elite_plus_medium.png
IHC Results	In paraffin embedded Human Placenta shows nuclear staining in trophoblasts. Recommended concentration: 2.5-3.8µg/ml.
ELISA Detection Limit	Antibody detection limit dilution 1:64000.
Western Blot	Approx. 38kDa band observed in nuclear lysates of cell lines HeLa, A431, Jurkat and K562, and approx. 37kDa in Human Skeletal muscle and in nuclear lysates of cell line HepG2 (calculated size of 33.3kDa according to NP_079058.1). These molecular weights have been observed by other sources. Recommended concentration 0.03-0.1µg/ml. Primary incubation 1 hour at room temperature.
Application Type	Pep-ELISA, WB, IF, IHC, FC

DOCUMENTS

- [Data Sheet](#)

GALLERY IMAGES

